

The Cleobury Clarion

SERVING CLEOBURY COUNTRY

January 2015

RAINBOWS RULE



All these lovely, smiling young ladies are members of the 21st Cleobury Mortimer Rainbows. On November 21st they gave up their time to help fill shoeboxes for Samaritan's Purse, with guidance from Jenny Vanderhook. The result; 168 boxes of Christmas gifts for underprivileged children.

Photo: Jean Basham

THE CLARION GETS EVEN BIGGER

With this first Clarion of the New Year, we hit a new high with 850 copies produced. This edition, printed before Christmas so that we could get it to most of you on January 1st, has seen a slight reduction in page numbers to 60, but we expect to be back up to 64 again very soon.

I have never ceased to be amazed at the success of what is just a rural newsletter, but its aim of reporting local news and avoiding doom and gloom does seem to work. Ten years ago it launched as a 24 page experiment, with 550 handed out around the area. Five years ago I talked about it to the Breakfast Club and vowed that it wouldn't grow beyond 40 pages, simply because there would be danger of the tail wagging the dog. 850 copies, 60 or 64 pages each month. Down, Rover!

THE EDITOR IS ON HOLIDAY

I have been told by my older son that I am having a holiday. No arguments.

So early in the New Year I will be winging my way to Singapore, courtesy of the same generous man, to stay with his family for ten days or so. Shorts will be worn (is Singapore

ready for this?), socks will not, shoes will be sandals at most. I will not take a mobile phone, nor a business computer and I will not listen to the BBC Overseas Service or NBC.

Don't ask when I'll be back, but I intend to be refreshed and getting the next Clarion out, on time for February 1st. I'll miss you all.

Seasoned Oak Logs For Sale

Free Local Delivery

Also Mixed and Softwood Available

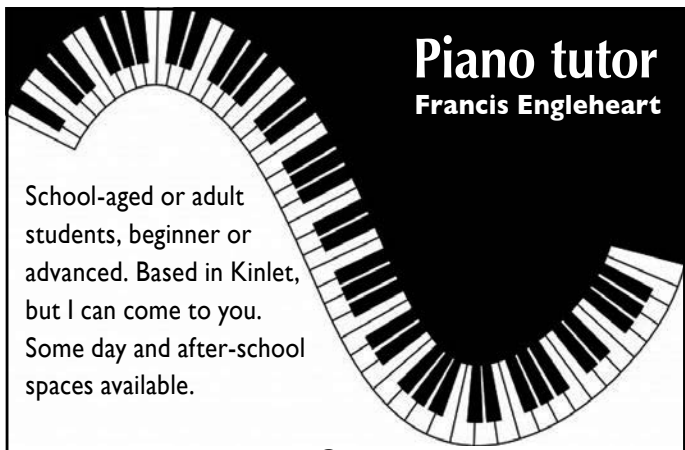
Tel: 07976 895 267

01584 890 795

K Phillips & Son Groundwork

E: kphillipsandson@yahoo.co.uk

Piano tutor Francis Engleheart



School-aged or adult students, beginner or advanced. Based in Kinlet, but I can come to you. Some day and after-school spaces available.

07710 288526 • fengleheart@hotmail.com

KIDDERMINSTER
INC BEWDLEY & STOURPORT-ON-SEVERN

PHIPPS & PRITCHARD WITH McCARTNEYS

BASED ON TEN SEPARATE SURVEYS
CARRIED OUT ON THESE DATES

24-28 NOV 11, 12-18 APR 12,
10-16 JUL 12, 4-10 DEC 12,
6-12 MAR 13, 29 JUL - 2 AUG 13,
13-20 NOV 13, 13-20 FEB 14,
20-26 MAY 14 & 15-21 AUG 14

TENTH TIME
IN A ROW!

ONE SIMPLE MESSAGE
MORE SOLD SIGNS
THAN ANY OTHER AGENT

SOLD SIGN AUDIT
28.7%

AGENT 2 15.3%

AGENT 3 10.3%

AGENT 4 8.0%

AGENT 5 7.9%

AGENT 6 6.8%

AGENT 7 4.7%

OTHERS 18.3%



forsale

SIGN ANALYSIS

SUPPLIERS OF INDEPENDENT
MARKET SHARE REPORTS
THROUGHOUT ENGLAND AND WALES

*PHIPPS & PRITCHARD WITH McCARTNEYS WAS THE ESTATE AGENT WITH THE HIGHEST NUMBER OF SOLD SIGNS DISPLAYED BETWEEN THE DATES SHOWN. THIS IS THE AVERAGE RESULT OF THESE SURVEYS.



independenceassured

For Sale Sign Analysis confirms that this advert is a fair and accurate representation of the information found between the dates shown. The quantity of For Sale and Sold signs does not necessarily equate to the number of completions.

0845 308 2004 • www.forsalesignanalysis.co.uk

The Cleobury Clarion Local Information Page

January 2015 - Volume Twelve - Edition Ten

Editor and Advertising Sales: Jim Reynolds, 4 Childe Road, Cleobury Mortimer, Shropshire DY14 8PA. Telephone: 01299 270642 Mobile: 07410 977 212

E-Mail: editor@cleoburyclarion.co.uk or uncle.jim@icloud.com

Printed by: Linda Fowler at Glint Print 01299 266657

The Clarion On The Web:www.cleoburyclarion.co.uk

*The Clarion is owned and published by
Cleobury Clarion Media Limited*

Collect the Clarion in Cleobury Mortimer from: Spar Grocery, M & M Baldwin, The Post Office, Cleobury Cafe, The Severn Hospice Shop, Harry Tuffin's, Carrot Tops, The Library, Simply Fresh and McCartneys Estate Agents.

Or Out in Cleobury Country at: Heath Farm Meats, **Bagginswood**; Clee Hill Post Office; Cleobury North Village Store; Clows Top Post Office; The Sun and Slipper at **Mamble**; Hopton Bank Service Station; Ludlow Library; Mawley Oak Garage; The Fighting Cocks, **Stottesdon**; The Duck Inn, **Chorley**; The Live and Let Live, **Neen Sollars**; The Eagle and Serpent, **Kinlet**; Parker Motors, **Ditton Priors** and McCartneys Estate Agents, **Tenbury Wells**.

Missed your Clarion? Cleobury Mortimer Library keeps the current month's copy on file.

THE DEADLINE FOR THE FEBRUARY ISSUE IS JANUARY 24th

Clarion Contacts - Useful Local Telephone Numbers and Emails

CEMETERY ADMINISTRATOR - 07703 965 064 Theresa Parfitt; theresa.25016@hotmail.co.uk

CLEOBURY COUNTRY CENTRE - 01299 272300 In Love Lane. Open 09.00 to 5.00, Mon to Fri.

CITIZENS ADVICE - 08444 991100. Advisors on line 10.00 to 4.00.

CLEOBURY COMPASSIONATE COMMUNITIES (CoCo) - 01299 270018. Katja Ward is the contact; office hours 10.00 to 12.00 noon Wednesday only.

CLEOBURY MORTIMER LIBRARY - 01299 272301. Vicki Alexander is our librarian. Open 9.00 to 5.00 Monday to Friday and 10.00 to 1.00 Saturdays.

LOCAL POLICE - Constable Anne O'Leary; ann.oleary@westmercia.pnn.police.uk

CLEOBURY MORTIMER SCOUTS AND GUIDES: Iain Smith CM 271809

CRIMESTOPPERS - 0800 555 111. Free Police contact. Talk in confidence, to report any crime.

DOMESTIC VIOLENCE HELPLINE - Women's Aid, 24 Hour support: 0800 783 1359

HOME FROM HOSPITAL - 01584 878046. Help over the first weeks back home from Age UK.

JOB VACANCIES - 01299 272300. See the local list in Cleobury Country Centre.

MARKET HALL- Dorothy CM272717, 07761 976650 mobile, or dorothymcbride@cleobury.org.uk

MEDICAL CENTRE - 01299 270209. Out of surgery hours, the Shrop Doc Service.

SHROP DOC - 08444 068888. Service available evenings and weekends.

THE PHARMACY - 01299 270219. Closes for half day on Saturday. Delivers prescriptions.

NIGHTINGALE NURSING FUND - 01746 718210. Rosemary Abbiss is the contact.

PARISH COUNCIL - Clerk Matthew Sheehan is in the Market Hall from 9.00 'til 2.00, Monday to Friday. 01299 271154. The Council meets in the Market Hall on the first Monday of the month; meetings are open to the public. Website: www.cleobury.org.uk

POST OFFICE - 01299 270201. Many services in Cleobury: car tax, foreign currency, cash point

SAINT MARY'S YOUTH PROJECT - Mark Greaves 07828 116810, mark.stmarys@live.co.uk

SHROPSHIRE COUNCIL - 0345 678 9000

SOUTH SHROPSHIRE YOUTH FORUM - E-mail richard@ssyf.net.

VOLUNTARY CAR SCHEME - 01299 666119. Mrs Val Simpson is the coordinator.

WASTE DISPOSAL - 0345 678 9007. The contractor is Veolia

RED  HARE

Your hair is our best advert

Experienced stylists offering on trend hairdressing services

KEVIN.MURPHY colours and products
Ammonia, paraben, sulphate and ppd free.

www.redhairesalon.co.uk

01299 270702

45 HIGH STREET CLEOBURY

Agricultural Team Legal specialists in all things rural

- Planning, Land Registration and Development
- Buying and Selling Farms and Rural Property
- Sporting and Fishing Rights
- Restrictive Covenants
- Farming Dispute Resolution
- Business Diversification
- Tenancy Agreements
- Tax Matters for the Farming Community



www.painters-solicitors.co.uk

*Serving the Wyre Forest
for over 60 Years*

For more information contact:

Nicholas Hughes on 01562 822295 or Wendy Beaumont on 01299 822033

The Cleobury Clarion. January 2015



*Ron retires.
See Page 19.*



*You could hear a pin drop. Joss
Carter brings modern dance to
Cleobury. See Page 29.*



*Hard job to do, soft touch works.
Adrian Satterly
Page 55.*

And On Other Pages....

- 3: Local Information
- 7: The Coming of the Kings
- 9: A Big Thank You
- 11: Chiropractor Extraordinary
- 13: Midland Quarry helps out
- 15: The Clarion Jobs Page
- 17: On The Market - Cakebole
- 21: The Severn Edge Vets Pets Page
- 23: Happenings on High Street
- 25: Becky Retires
- 27: Philip Dunne MP
- 30: The Social Calendar Part One...
- 31: ...and Part Two
- 35: £2,500 to Severn Hospice
- 37: The Farming Page - Jenny
Everingham
- 39: Clarion Coppers
- 41: Buses! The saga continues....
- 43: The Weekly Social Calendar
- 45: January in the Wyre Forest.
- 47: Cleobury Town Juniors
- 51: Bayton CofE Primary School
- 57: News from the Guides

John Brazier & Co

Accountants & Business Advisors

Accounts – Company, Partnership and Sole Trader
Tax Returns – Corporation Tax and Personal
VAT - Returns and advice
Payroll Service including RTI

For a personal and
professional service

Contact John Brazier or Sarah Morgan to discuss your requirements on 01299 271473 or email at info@johnbrazierco.co.uk. Alternatively, you can arrange a meeting at 53, High Street, Cleobury Mortimer, Worcestershire DY14 8RB

01299 271 473

Good Food and Fine Fayre

Ashley's Bakery

Supplying fresh bread, daily,
from Ashley's Bakery in Cleobury to our shops at:

Cleobury Cafe Bakery Dept. 01299 271 517

Teme St, Tenbury Wells 07772 743570

Load St, Bewdley 01299 404147

Also available.....

Bakery Direct to the Trade

Outside Catering available

For more details

Call 01299 271 283

High Street,

Cleobury Mortimer

(Est. 1988)

Cleobury Cafe

Breakfast, lunch and afternoon tea

available 7 days a week

A hot & cold takeaway service

And the bakery Dept.

Selling Ashley's bread & cakes

Grab lunch on the run and

pre-order on...01299 271 517

High Street

Cleobury Mortimer

Mon—Sat 7am—5pm

Sun 8.30am—4.00pm

Clarion Clippings - The Local News

NO MORE KNOWBURY CANE

John Felix, who ran Knowbury Cane Seating from his cottage in that charming village just below the Clee Hill, is closing the business and retiring. Not that he really wanted to give up, but getting supplies of good, reliable materials has become a headache and he does not believe in using anything less. He did a lovely job for many people and we wish him a long and retirement, though we suspect he won't have his feet up too much.

Such a shame to see a capable craftsman stop working, not because of a lack of work, but just the materials to do the job well.

ROCK PATHFINDERS JUST DON'T EVER STOP

They have two walks scheduled for January. The first on New Year's Day, starting from Great Witley Village Hall at 10.30.

Then on the 15th they gather at The Colliers Arms, on the A456 at Rock for their second outing of the New Year. Alan Jones on 01299 400304 will tell you more, or the Ordnance Survey references are in the Monthly Social Calendar. As they always remind us - Everyone Welcome.

LATIN JAZZ AT CLOWS TOP

Our enthusiasm for Shindig organised events at the Clows Top Victory Hall is well established. They do musical events very well and have what looks like another great night heading our way on January 31st.

It features the five piece Latin American jazz band Heads South, big on the London jazz scene with their Cuban influenced music that has had some very strong press acclaim. Once again, this evening offers two options: £12.00 to include a supper or £10.00 for just the music. We've tried this and it was a top value evening.

Tickets from 01299 832456 or from Brians the Butchers or Clows Top Post Office. If you're interested, don't wait too long to book.

THE COMING OF THE KINGS

This celebration of the Epiphany on January 9th will be in Saint Mary's, the delightful parish church of Neen Savage. It comprises carols and readings, with a dedication of the tapestries of the Creation. All followed by wine or soft drinks with light refreshments to round

off the evening. Starting time is 6.30

THE READING GROUP

Our December meeting heralded the early arrival Christmas spirit with food and drink that soon put aside any inhibitions about expressing opinions. Robert Harris's 'The Fear Index' was the beneficiary, generally liked despite its gloomy forebodings of machines taking over. We had found the solution: give them glass of wine and they'll soon mellow.

How will this effect hit our views of the Christmas read, Chimamanda Ngozi Adichie's 'Half of a Yellow Sun'? Surely mild hangovers will not be allowed to cloud objectivity? On Monday the 19th we will find out, in the library at 7.30. It will be an entirely sober but friendly evening, where new members will be made very welcome.

At the end of the evening and on into email exchanges, congratulations were offered to chair Deana Kimber for her quiet and generous leadership that gives everyone a chance to speak.

SILLY BIT

'The other day someone told me I could make ice cubes with leftover wine. I was confused - what is leftover wine?'

SPAR



NATIONAL LOTTERY
NOW AVAILABLE AT

SPAR

CLEOBURY MORTIMER!

OPEN: 7am-9pm MON-SAT
8am-8pm SUNDAY

General store, off licence, newspapers mags, gas,
electric top-ups, Health lottery, Bill payments.

Telephone: 01299 270236



Good Food and Fine Fayre

CARROT TOPS

YOUR LOCAL FRESH FRUIT & VEG SHOP

CHRISTMAS IS FAST APPROACHING; SO WHY NOT TREAT YOUR LOVED ONES TO A SEASONAL HAMPER THIS YEAR. DELIVERED LOCALLY OR POSTED TO THOSE FURTHER AFIELD.

PRICES STARTING FROM £10.00

ORDERS NOW BEING TAKEN

PLEASE FEEL FREE TO CALL IN & SEE US AT THE SHOP
CARROT TOPS, 28 HIGH STREET, CLEOBURY MORTIMER

WE ARE OPEN 7 DAYS A WEEK

MONDAY – FRIDAY 8.30AM – 5.00PM

SATURDAY 8.30AM – 3.00PM & SUNDAY 9.30AM – 12.30PM

OR CALL JULIE – 01299 272886 OR 07951 633585

WE ARE ALWAYS HAPPY TO HELP

THE FIGHTING COCKS

No 1 High Street, Stottesdon, DY14 8TZ. Telephone 01746 718270

Telford & East Shropshire CAMRA
'Rural Pub of the Year 2013'.

Excellent Food from Local Produce
Real Ales including Hobsons
SHOP AT THE COCK

Local produce. Meat, cheese, bread,
fruit, vegetables, butters, smoked
salmon. tinned food and more.

Friendly, compact, full of surprises.

MUSICAL SATURDAYS TO COME:

Dec 6th: Fight the Bear

Dec 13th: Cooper and Davies

Dec 20th: Paul Parker & All The Right People

MONTHLY SUNDAY OPEN MIC:

DECEMBER 8th.

6.00 start. All local talent welcome

High Street Cleobury Mortimer
DY14 8DX

*Bowkett's
food
Emporium*

Open:~

Mon to Fri 8.30am - 5pm &

Sat 8.30am - 2.30pm

Quality locally sourced meats and poultry cut and prepared
by Lewis & Brett our skilled butchers

Bowkett's Gold Award Winning Traditional Pork Sausage - Cooked meats and British & continental cheeses -
Award Winning Speciality Sausages and Bacon, Bowkett's home-made Faggots, Lasagne, Cottage Pies,
Sausage Rolls, Pork Pies, Scotch Eggs & Quiches

Sandwiches & baguettes while you wait or call our friendly staff who will be happy to take your order
Hot tasty succulent chickens, sausage rolls and pasties

Delicious tasty baguettes and rolls baked on the premises and much more.....

Coffee to Go - Made from bean to cup ~ treat yourself to a splash of vanilla or hazelnut syrup

 Bowkett's Food Emporium

ALL DRINKS JUST £1.50 a cup

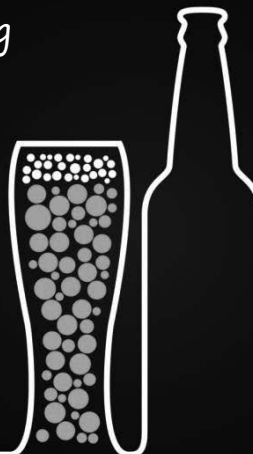


*Looking for a venue for a big
celebration in 2015?*

Why not book the Royal Fountain Inn for a
private party, including catering if required?

We can also provide a fully licensed events bar
at other venues.

Just give us a call to find out more.



FREEHOUSE

**ROYAL
FOUNTAIN
INN**

01299 272720

www.royalfountaininn.co.uk

www.facebook.com/royalfountain

Clarion Clippings - The Local News

LOOKING BACK WITH THANKS



The late Mike Hall in his favourite watering hole - the King's Arms.

It has been just over a year now since my brother, Mike Hall, passed away as a result of cancer. Time allows me to look back and reflect on the last few weeks of his life without becoming too emotional, enabling me to write about my appreciation for the people who helped us through this tough time.

Mike loved living in Cleobury and made many friends. When he first moved here he told me about how long it took him to walk down the High Street because so many people wanted to chat. He was surprised how different life could be in another part of the country, much more

friendly than his previous home in Kent.

Towards the end of his life people showed great kindness to Mike, especially Wendy and her staff at The King's Arms who tried to encourage him to keep eating by making special little meals of his favourite food and making sure he could access the pub on his mobility scooter by opening the delivery door for him. So Thank You to all at the K.A.

His nursing at the Severn Hospice in Telford was beyond expectations. The compassion and care highlighted that without the dedicated team of workers in charity shops, this standard of care would not exist so Thank You to our local team.

When Mike passed away I was extremely impressed by the professionalism of Adrian Satterly, our local undertaker of Wyre Forest Funeral Services. Every detail was taken care of, nothing was too much trouble. We were never made to feel we had to make decisions in a hurry or that any ideas were unacceptable. Adrian was a true gentleman whose respectful approach showed in his ability to make the whole funeral

process a smooth, memorable occasion. How Mike would have smiled in his coffin at the spectacular, elegant procession Adrian provided from one end of Cleobury to the other. So Thank You Wyre Forest Funeral Services from myself and all family members.

Sue Burgess

NEW DEAL AT FAIR SHARE

The Fair Share Credit Union, who are in Cleobury Library every Friday morning, have launched a new service; Handi-Loan. It lets you borrow at a very favourable rate; for example you can have a loan of £500 and pay back £14.00 a week over a year. The total you will actually pay is a huge saving over what some payday loan companies will charge.

Or if you want to borrow a little more part way through the year, the OpenCash service lets you have a bit more and carry on repaying at the same rate. They really are making this money business easier and saving borrowers a lot of interest.

Fair Share are on 01952 200200 or 01743 240403, or they'll be happy to chat at the library.

KINLET C OF E PRIMARY SCHOOL

Preparing for the future in a caring Environment



Large field and playground
Caring Ethos

admin@kinlet.shropshire.sch.uk
Telephone: 01299 841210

Broad and balanced curriculum
Breakfast and Afterschool Clubs

www.kinlet.shropshire.sch.uk



Tel: 01299 272 785
or 01299 271 313

THE LAMP
Bangladeshi & Indian Cuisine

15a High Street
Cleobury Mortimer
DY14 8DG

- ◆ Fully Licenced & Air Conditioned Restaurant
- ◆ Open 7 Days A week (inc. Bank Holidays)
6pm-11pm
- ◆ Open every Sunday 12.00-4pm, Set Menu for £8.95
per head or normal menu available.
- ◆ Free Home Delivery on all orders over £15.00 within
5miles and orders over £50.00 within 6miles.



Find us on Facebook
Lamp Inn Cleobury

**Merry Christmas & a Happy New Year to
our old & new customers!**



Produced & bottled at
Mawley Town Farm,
Cleobury Mortimer
01299 270359

**The Robinsons at
Mawley Milk**
**Wish all our customers a very merry
Christmas and peaceful 2015**

Like us on Facebook/Mawleytownfarm

To find your nearest stockist visit our website www.mawleytownfarm.co.uk
email: info@mawleytownfarm.co.uk

THE CRUSTY COB

BAKERY, SANDWICH BAR AND TEAROOMS

Wide range of fresh bread supplied daily, including speciality items
Freshly made sandwiches to take away
Award winning pork pies from Reg. May
Large selection of cakes and confectionery
Telephone orders taken; Delivery service available; Outside catering

Open from 8.00am to 5.00pm, Monday to Saturday
18 Church Street, Cleobury Mortimer Tel: 01299 271190

simplyfresh

Tel: 01299 270 182
2/3 Talbot Yard,
Cleobury Mortimer, DY14 8BQ.

Opening hours:
Mon—Sat 7am—9pm
Sun 8am-8pm

**Local & Seasonal Produce,
Delicatessen Counter,
Organic & Gluten free ranges,
Greengrocery,
Off Licence, Newspapers,
Health Lottery,
General Convenience Store**

Clarion Clippings - The Local News



Military helicopters are a part of everyday life for the military, but when a landing goes wrong it can be a very painful experience.

In the early 90's I was a soldier, serving with the famous Blackwatch Regiment. During my service I sustained a back injury due to the 'heavy landing of a helicopter'. The injury was severe; I was medically downgraded and subsequently left the military to work as a civilian in the same environment.

My job entailed weapon management and at times heavy lifting, something I had been able to do prior to my injury. But the pain became difficult to manage and it became evident that I could no longer perform to an acceptable level and had to leave on medical grounds.

Back in 'civvy street' I was persuaded to undergo spinal surgery, which I felt would at least help with the increasing pain levels. Unfortunately this has not helped with the original

injury and has exacerbated the pain to almost intolerable levels. I found myself depressed, taking antidepressants and controlled drugs to help with the pain, not able to keep awake enough to function in the real world. Feelings of inadequacy became a bigger and bigger issue. During the first few years of retirement I moved home and ended up in a lovely small community where everyone seemed to know each other and if you had a problem someone somewhere would know how to fix it.

On the main street there was a chiropractor who always looked busy and the premises very welcoming. My wife suggested that a complementary medical approach may be a way forward and made me an appointment.

I was reluctant to go - you hear stories about 'crunching' bones - but I went with an open mind and I am so happy I did. The staff were really friendly and accommodating. I was in pain but they never asked me to do anything I found difficult. They took my details and Sue Brown, chiropractor extraordinary, recognised the euphemism 'a heavy landing' having been a helicopter pilot herself. She has the same sense of humour and, as such could

reach parts of my psyche that other medical personnel could not. Sue explained her methods, drew diagrams I could understand and gave me a thorough exam and diagnosis of my problem. She explained where my injuries lay and how she could help me. The treatment plan was devised after viewing my x-rays and further consultation. She assured me there would be no snapping of joints or jerky movements.

Sue's approach is compassionate and she displays a depth of empathy, especially in her work for 'Hands For Heroes'. This charity provides help for injured military personnel without cost to the individual. This has enabled me to have a number of pain relieving sessions without worry about the cost. She is the only practitioner that offers her time for this in the area, and if we hadn't moved here I feel I would still be in pain without any expectation of relief.

My family and I cannot find words to thank Sue enough. May she continue to build her practise and continue with her often unrecognised charity work.

Anon, ex-Staff Sgt. REME

www.handsforheroes.com

Animal AuPair

Loving Care When You're Not there.

www.animalaupair.biz



Lulu West; Registered Dog Walker, and Cat & Dog Pop in Visits
Dog day care & walks; Pop-in-feeding & medication; Cat Feeding
Fully insured and trained
Cleobury Mortimer and the Local Area

Tel: 07791 017858

Email: lulu@animalaupair.biz

Lulu West O.A. Dip

Registered Pet Home Sitter and Dog Walker (NarpsUK)

Clarion Clippings -- The Local News

The Miah Brothers Famous Spice Empire

Bringing great taste and value to Cleobury Mortimer for 17 years



17 High Street, Cleobury Mortimer
6-11pm 6 Days a Week
Acclaimed Indian restaurant with
wide range to suit all tastes.
Sunday Buffet from 12.00pm-
9.00pm.
As much as you can eat for just
£9.95 a head.
Free home delivery up to 5miles
Reservations: **01299 270419**



6/7 Church Street, Cleobury Mortimer
*'Fine bar, excellent food at prices to
suit all pockets'*
Top Value dining.
Our Dine In Meal Deal gives you a:
starter, main course and naan or
rice for just £9.95.

Tuesday to Sunday, 6.00-11.00pm
Reservations: **01299 271485**



57 High Street, Cleobury Mortimer
6-11pm Wednesday- Sunday
Dine at home with the same great
quality our restaurant offers.
Monday- Tuesday
collect Takeaways from
Spice Empire:
Tel: 01299 270419
Free home delivery up to 5miles.
Orders: **01299 271604**

SPICE NEWS:

Orders over £40 come with free bottle of wine. Free Delivery up to 5miles from the Spice Empire & Spice Express.
www.facebook.com/pages/the-spice-empire

CLEOBURY MORTIMER CARPETS

Supplying & Fitting of:-

- Carpets
- Natural Floorings (Coir, Sisal & Seagrass)
- Vinyls

Carpets supplied by: Victoria Carpets, Fibre Flooring
& Alternative Flooring at Unbeatable Prices.

Contact Details:-

Address: 26 HIGH STREET,
CLEOBURY MORTIMER, DY14 8BY
Telephone: H:01299270095
M:07739186163
Email: garethleach@aol.com

Or check out our new website:

www.cleoburymortimercarpets.co.uk

The Talbot Hotel Cleobury Mortimer

Every Wednesday Night 2 Steaks for £12.00.

2-4-1 Early Bird Special, Mon to Fri 5.30 till 7.00pm.

Sunday Lunches served with fresh seasonal veg & all the
trimmings. £7.95

01299 272898

Clarion Clippings - The Local News

MIDLAND QUARRY TO THE RESCUE



Big smiles all round as Hugh McGuigan of Midland Quarry Products hands over a cheque to Marion at Newbridge Cat Rescue.

Caring for up to 100 rescue cats is hard work, but when the winter weather hits and the pathways turn to mud, daily routines become an endurance test for Marion Parsons at Cleobury Mortimer's Newbridge Cat Rescue.

Step in Midland Quarry Products at Clee Hill, who rushed to the rescue. First they delivered a load of their best No 1 stones to improve the paths, then they donated a cheque for £500 to help with the Centre's food and vets bills.

Hugh McGuigan, Manager of Clee Hill Quarry was delighted to present the cheque to Marion. Keen to help develop

relationships in their local community MQP felt that by helping someone like Marion, who is working so hard for the benefit of others, was an ideal way to help make a difference.

Newbridge Cat Rescue has been taking in cats for seven years. It has grown and is now inundated with cats, often between 70 and 100 at one time. They come from people whose circumstances have changed, but many are found abandoned. The ultimate aim is to rehome as many as possible but some end their days in Marion's special sanctuary for those who are not chosen because people consider them too old for adoption.

All at a financial cost to Marion who for the most part pays for the cats to be fed, neutered, wormed, defleaded and for other vets bills, out of her pension. She has some help with food from donation bins in Sainsbury's at Kidderminster and the Co-op in Cleobury Mortimer, but this is a drop in the ocean for what it is actually costing.

Midland Quarry Products' generous donation will keep the wolf from the door for a while and any future donations of food or money will be gratefully

received either direct to the Centre or via their Amazon wishlist which is featured on the Centre's website <http://ncrrhc.weebly.com/>. People can also help by adopting one of the cats that are waiting to be rehomed. They can bring joy to people's lives, grateful for the chance of a new home, they repay kindness with affection.

CONGRATULATIONS

To Jean Watkiss, December winner of the Lacon Lottery, who drew a useful festive season payout of £64.00 for her investment of just £1.00.

THE CLEOBURY TRADE CARD

This excellent product from Cleobury Country will be distributed by hand to all town households this month. Its handy listing of local businesses is a great source of information, especially if you have one of those winter emergencies and don't know who to contact.

It won't be available early enough to be distributed with this edition of the Clarion, but we will have copies in all our Out of Town collection points in February. A great aid to both local shoppers and the businesses who serve them.



Home Support Services

All staff enhanced DBA checked with over 20yrs experience and training within the local authority/social services mainstream and dementia care sector. Fully insured.

Are you in need of support with the following basic day to day tasks?

Assistance during the day or night	Completing Forms
Companionship	Pet Care
Shopping/Household tasks	Attending social events/ appointments

Contact Liz
Tel: 01299 271623
Mob: 07826 929222
liz@lifelifeathome.co.uk

Contact Tracey
Tel: 01299 821183
Mob: 07957 659909
tracey@lifelifeathome.co.uk

Other support services available on request.

www.lifelifeathome.co.uk

CLARION ADVERTISING WORKS!
 AND WITH CIRCULATION UP TO 850 COPIES EACH
 MONTH, IT REACHES EVEN MORE LOCAL PEOPLE.
 FULL DETAILS AND COSTS FROM THE EDITOR AT
 01299 270642 or editor@cleoburyclarion.co.uk

SIMON CARTER
**PROFESSIONAL PAINTER AND
 DECORATOR**

**PLASTERING,
 TILING, COVING
 AND GLAZING**
*5 LOVE LANE,
 CLEOBURY
 MORTIMER*

• Type to enter text

KNOWLE SPORTS SALES
 Tenbury Road, Clee Hill.
**No Sales in
 December.
 Back in 2015**

STILL WANTED: Good
 clean donations.
 Collections: 01584
 891249

Gilbert Carter Specialist Joinery



- Built in Wardrobes
- Double Glazed Wooden Windows
- Staircases
-

Email: Gilbertcarter51@gmail.com 01299
www.gcartersmartjoinery.com 270626 Qualified tradesmen, fully insured

Firewood

Seasoned logs, barn dried & ready to burn.
Free local delivery -01584 890993 or 07970878224
Various size loads available



Paul Harding Tree Services



The Clarion Jobs Page

PART TIME JOB VACANCY

An administrator supporting Cleobury based financial advisor Grainger Jones at Escom Independent Financial Planning Limited.

The following are essential: Excellent administrative skills, a professional telephone manner, an enthusiastic approach to work, a willingness to learn about the financial planning industry if not familiar with this field of work.

The long term objective is for a full time position to be available to the successful applicant as the office becomes more established in the area.

A competitive salary is available.

If you feel you have the necessary attributes, please forward your CV to:

Grainger Jones, Escom Independent Financial Planning Limited, 53 High Street, Cleobury Mortimer DY14 8DQ, email to gj@escomifa.com pr phone 07974 100089 for an informal chat.

Job Title/ Company	Job Requirements	How to Apply
Maternity Cover English Teacher Lacon Childe School, Cleobury Mortimer.	Full time from March 2015. Looking for an energetic, ambitious and enthusiastic teacher for maternity cover . For more details see website: www.lacon-childe.org.uk	Applications should be received by Monday 1st December 2014. For more details contact Mrs S Broad, Headteachers PA on: Tel: 01299 270312 Email: broad's@lacon-childe.org.uk
Bar and Waiting Staff The Stable Tavern, Talbot Yard CM.	Looking for motivated enthusiastic individuals to join the bar and waiting team. Will be responsible for maintaining the highest standards of service and beverage preparation. Experience preferred but full training will be given.	Please email your CV to: thestabletaverninn@gmail.com With a covering letter
Part Time Office Assistant Little Lakes Holiday Park	Flexible working house, duties consist of: Maintaining purchase ledger, Providing payroll support Manning park desk and dealing with customer enquiries. Sage payroll experience would be useful.	For more information or to apply email your CV to: Nick.fernihough@littlakesleisure.co.uk Closing date for applications: 5th January.
Apprentice Baker Ashley's Bakery	5x Days a week to include Saturdays 4.30am start 30+hours per week	For a detailed job description or to apply contact: ashley@estellepugh.wanadoo.co.uk

**LOCAL BUSINESSES PLEASE NOTE.
SITUATIONS VACANT ADVERTS ARE ALWAYS WELCOME
AND THEY ARE PRINTED IN THE CLARION AT NO CHARGE.
THIS IS A COMMUNITY SERVICE AND WE ARE HAPPY
TO COOPERATE WITH THE CLEOBURY COUNTRY CENTRE
TO BRING YOU A SELECTION OF POSTS NOTIFIED TO THEM
BY A LOCAL JOB CENTRE PLUS.**



SHIRE BUILDING SERVICES

All aspects of building covered including extensions, renovations, conversions, brick laying, stone masonry, roofing, groundwork, landscaping, plastering, carpentry and project management.



For more information or to make an enquiry please contact
Oliver Price on;



07528545146



email ollyprice@hotmail.com



www.facebook.com/shiresbs



Kim Stanley

HEALTH & BEAUTY

0 1 2 9 9 2 7 1 8 0 0

Spraytan Non-Surgical Facelift Electrolysis Aromatherapy Waxing Reflexology
Gel Polish Spa Find Facials Jessica Nail Care Hot Stone Therapy Hopi Ear Candling

Enquire instore for full range of treatments available.

Kim Stanley

IHBC - BABTAC

3 0 . H i g h S t . C l e o b u r y

REIKI

**Feeling Anxious, Stressed or Low ?
Reiki Soothes, Relaxes and Comforts.**

www.katejones-reiki.co.uk

Tel. 01584 890284

3 0 H i g h S t

Kate Jones

* Over 20 years experience in Reiki (Reiki Master)

PHYSIO

**Chartered Physiotherapist, Emmett
Practitioner, Acupuncturist** (pain relief),
Pain, Stiffness, Musculoskeletal Problems,
Injury, Neurological Conditions, Lymphatic
Drainage, Sinus Congestion.

Tel. 07905 766729

3 0 H i g h S t

Jill Sharp

SRP, MCSP, BSc(Hons)

On The Market - Cakebole Orchard Produce



Annie Watson of Cakebole. "The Cleobury market is fantastic. The people are so friendly."

Annie Watson will tell you that Cakebole is "not a working farm." Maybe not with animals, but it's still a hive of tasteful activity and home to some wonderful blends of flavours.

She loves food and cooking, trained as a chef at Worcester Technical College and worked in the famous Brown's Restaurant in the city. Moving on, she ran a chain of Benetton shops with her first husband before opening a cafe and deli in Worcester's Crowngate Centre, That was quite a place, seating 150 people and serving home baked bread as one of many attractions. "Food is such an interesting thing, it brings people together," she explains.

With a background that includes a Canadian grand mother whose hand written recipes she still refers to, plus notes from other family members and ideas of her own, it's no surprise that she launched her own range of jams, chutneys and marmalade from Cakebole Farm. Just outside Chaddesley Corbett, at 20 acres it's no big spread, but soon after moving in the orchard was planted with apple, pears and greengage trees, while the fruit cages hold a variety of ingredients for her produce.

She has a separate kitchen for the business side, not that it's the semi industrial unit you might expect. More a domestic kitchen with focus and a large jam pot. Just one, but about two feet in diameter and kept very busy as she prepares batches of established flavours, new lines and some ideas of her own.

"I'm a morning person and like to get on with things," she smiles. "But sometimes I wake in the small hours with an idea and must get up and try it." She was invited to submit her idea for a flavour to complement a savoury sausage for the annual Dalemair Marmalade Awards in Cumbria and had one of her three o'clock moments. She put together an inspired blend of

Seville orange, ginger, sage and yellow mustard seed to win a Silver award and an entry for the 2015 competition. "If you get a Gold award two years running, that means a contract with Fortnum and Masons," she explains. How that single jam pot would cope with that level of demand she may never know.

To get the Cakebole brand launched she worked every local market, but cut back in deference to family needs. Today she supplies select spots like Mac & Jac's cafe and deli in Worcester and Pie Creator in Stourport, plus a range of customers who know a good thing when they taste it. Cleobury's Farmers' Market is her only regular pitch, plus big foodie events. "Cleobury is fantastic, I put out tasters for people to try. And they are so friendly, really nice." It's as much as she needs, a one woman show who grows the fruit, picks it, makes the jam, chutney or marmalade and delivers it to the customers.

Long hours? "Yes, but I love it, being busy, trying new recipes. Some of them people like, some they don't, but it's fun."

Take a look at www.cakeboleorchardproduce to learn more. Or meet the lady herself on the market.



CLEOBURY COUNTRY
FARMERS MARKET
IN AND AROUND ST MARY'S CHURCH
SATURDAY 17TH JANUARY 2015
FROM 9.30AM TO 12.30PM



NJ Plumbing & Heating

All aspects of domestic plumbing:
bathrooms-kitchens-showers-central heating

Oil boiler servicing



Registered
Business

Phone 01299 270175

Mobile:07967 659624

COMPUTER REPAIRS MAMBLE

PC 'MOT' CLEAN UP £49.00
GET YOUR MACHINE RUNNING FAST AGAIN

Quote Cleobury Clarion and get your
next PC MOT for JUST £40.00

WINDOWS INSTALLATIONS

DIAGNOSIS, REPAIRS & UPGRADES
OF LAPTOPS & DESKTOPS

LAPTOP SCREEN REPLACEMENT

SALES OF TAILOR MADE PCs

IPHONE REPAIRS

APPLE MAC REPAIRS

HOME VISITS AVAILABLE

During office hours
Within 5 miles
£10 call out charge
£25 per hour

TELEPHONE
01299 832 723

FIND US ON THE MAIN
A456 BETWEEN CLOWS TOP
AND MAMBLE
Upper Moor End Farmhouse,
Mamble, DY14 9JD

Opening Times:
Monday to Friday,
9.00am - 6.00pm

www.computerrepairsmamble.co.uk

Stewart Mumford Architectural Services Bespoke Architecture

Great value personal service backed up with extensive local knowledge,
established links with other construction professionals to ensure
comprehensive packages specifically tailored to individual needs.

Initial consultation free of charge.

Specialist in Works to Listed Buildings, Affordable Houses,
Open Market Houses, House Extension and Alteration, Barn
Conversion and Commercial Projects.



T: 01299 271068
M: 07977 921039
E: office@stewartmumford.co.uk

fairway

Accountants & Business Advisers

Proactive professional team available 7 days a week. Highly competitive fees.

Contact: Simon Hector 07896 439594 or Simon Connolly 07973 360456

Offices in Cleobury Mortimer & Stourport on Severn

Main Tel: 01299 822283 Email: team@fairway-net.co.uk
www.fairway-net.co.uk

Clarion Clippings - The Local News

STOTTESDON AND DISTRICT W.I.

27 members and visitors met in Chorley Village Hall on December 10th, to learn how to create Christmas wreaths with a difference. Clare Tibbits (wearing her felt hat with yak felt rosette, made last week at WI's Denman College) led us through the process of shaping the wreath frame base from green willow shoots, before decorating with evergreens, seed heads and even strings of beads – each one different, all unique. We certainly felt we had earned the hot punch and cakes that followed.

Our Christmas tree for the nursery rhyme themed Church Festival went up smoothly, weighed down with twinkling stars. Later on we met for a convivial meal at The Three Horseshoes, where we again enjoyed a warm welcome, local food and fine cuisine brought piping hot to the table. Our grateful thanks to hosts Chris and Sue.

2015 begins with a Fun and Games evening, plus a trading stall, at Farlow village hall on Wednesday January 21st at 7.30 pm. Why not begin the New Year by coming along?

Marian Wootton

RON JORDAN RETIRES

He's almost a part of the town's furniture, such a familiar sight on the High Street and held in high regard by almost everyone who's been served by him. Ron Jordan didn't own Mumford's Ironmongers, but he knew every nook and cranny, every item of stock, and where to find it.



Ron outside Mumford's, where he was the fount of knowledge.

He left school to start work in Basil Mumford's wonderful shop in 1963, cycling in from Cleeton and back again in the evening, when that haul up Hopton Bank must have been a

real test of strength and endurance.

He seemed to know every item in the shop's huge stock, which in the early days included the large sheds at the back. With a quiet smile he'd listen to what you were looking for, turn and disappear into the depths of the establishment and emerge carrying what you wanted.

The bicycle eventually gave way to a car, making his journey easier, but his gentle patience and knowledge never changed. He retired at Christmas; a town landmark who will be very much missed.

A VERY WELCOME MESSAGE

This message came in from Cancer Research UK. It's for lots of people who help their funding:

This year we were able to say that 1 in 2 people now survive cancer. This wouldn't have been possible without supporters funding life-saving research.

There is still much to do and we won't stop until all cancers are beaten, but we know that together we will get there.

This Christmas we want to say a big Thank You for all your support. One day we will beat cancer and because of your help, that day will come sooner.

The Cancer Research UK Team

MOLE CONTROL
CONTROLLED PEST REMOVAL
For a Free Quote Call:
07791 175908

CARTERS AUCTIONEERS

REGULAR AUCTIONS OF ANTIQUES AND
COLLECTABLES AT BLAKEDOWN PARISH
ROOMS, NEAR KIDDERMINSTER.
VALUATIONS FOR PROBATE & INSURANCE
HOUSE CLEARANCES
CONTACT: JOHN CARTER
11 CHURCH STREET
CLEOBURY MORTIMER
TEL: 01299 271130 / 07779 311 792
www.cartersauction.co.uk

Birthday Parties
Holiday Activity Days

Climbing / Abseiling
High Ropes
Raft Building
Zip Wire
Big Bounce
Challenge Course
Indoor Caving
Ask about others



Tel: 01299 271217
Enquiries@pioneercentre.org.uk



Minimum Age 8yrs

90 minute Session
£11 per person
Minimum 10 people

3 hour Session
£20 per person
Minimum 10 people

Hire a room for an hour
After your session
To cut the cake etc £15



CLEOBURY MORTIMER PLAYGROUP

"....ALL FRIENDS TOGETHER"

Now proud to be based at Cleobury Mortimer Primary School.

Friendly and caring staff with flexible sessions times *(term times only)*

FOR ALL ENQUIRIES PLEASE PHONE JANE OR RACHEL ON; 07816 193933

Government 15 hours funding available for 3-4 year olds.

PLACES NOW AVAILABLE FOR CHILDREN AGED 2-4 YEARS.

Registered Charity no: 1037191



DRY CLEANING & LAUNDRY SERVICE
20 HIGH STREET, CLEOBURY MORTIMER
01299 270571

HOUSEHOLD & COMMERCIAL WORK WELCOME
FULLY ATTENDED, OPEN 7 DAYS

Self Service ~ Full Service Wash/ Dry/ Fold/ Ironing ~ Large Machine for Big Items
 Service Washing for Duvets/ Blankets/ Sleeping Bags ~ Team Sports Kit Laundry Service
 Equestrian Rug Cleaning ~ Laundry Service for Pet Items
 Professional Shirt Service ~ Nikwax Wash & Proof for Outdoor Clothing

.... the place to air your dirty laundry!

The Severn Edge Vets Pets Page

All creatures great and small...

There is no doubt that the job has changed a lot since Mr. Herriot ran around the Dales after everything from cows to cats. Alf Wight was his real name, a Glasgow University graduate from 1939. The library at the Vet School in Glasgow is named in his memory.

If you have ever read the James Herriot books, it is very easy to fall in love with the idea of becoming a vet (well it was for me, anyway) but what is actually involved?

To start with, you have to go to University, currently a choice of seven Veterinary Schools in the UK from Glasgow to London. To get into University you have to beat off 10 other applicants for your place, and pass some lovely interviews.

Following this, you have five years of lectures, study, exams and parties. If you pass your finals, you graduate and are then sworn into the Royal College of Veterinary Surgeons, the professional body to which all UK vets answer.

Much like passing your driving test – I have since learned that this is only the beginning! Now, the real learning can start. As a new graduate, you feel helpless, but luckily we all have strong support from our seniors to point you in the right direction with investigations and diagnostics.

I started in Leicestershire, at a mixed practice. I used to treat anything and everything that walked through the door from wounded horses to sneezing albino boa constrictors. Following moving home to Worcestershire, I have now come to specialize in treating small animals,

leaving the cows and horses to my cold, damp colleagues.

I love my job. It is hard work, but never boring. Every day is different, and I can go home saying 'I've done some good today', sometimes even 'I've saved a life today' – priceless.

If anyone wants to talk about becoming a Vet, feel free to call.

Don't forget that we are continuing our 20% off neutering offer until the end of January 2015. A great deal to help you all do what's best for your pets. To chat about Neutering, feel free to pick up the phone, or pop in and speak to the team. We now also have some handy and informative leaflets to help explain the pros, cons and alternatives.

Hope to see you soon.

Thanks for reading!

Jeremy Hall BVMS MRCVS.

Severn Edge Vets, Tenbury Rd, Cleobury Mortimer. 01299 271967.

20% off neutering

**claim online:
sevg.co.uk/neuter6**

Terms & Conditions Apply. Valid until 31/01/15.

More of Those Very Handy Small Ads ...

DID YOU KNOW?

60% of home heat is lost through walls and loft due to low or no insulation! This can be prevented with available Government funding.

It is no longer income based, so if the area has funding, you qualify! If you had your loft insulated 8 years ago, changing regulations mean you could need a top up - and it's FREE or heavily subsidised.

Cleobury based fully qualified Domestic Energy Assessor backed by a company with over 40 years experience.

Chris: 01299 or 07442 533 721



NEEN SAVAGE PARISH HALL

Lovely small rural hall with large car park
Less than 2 miles from Cleobury Mortimer
Ideal for smaller parties or events

For more information contact
Clare Ratcliff 01299 270173 or
Email: clare.ratcliff@gmail.com

Ever After

- Breakfast club
- After school club
- Holiday club
- "Forest schools" outings
- 15hrs education funding
- 24U funding
- Age ranges: 3 months to 11 years



Day Nursery

Cleobury Mortimer

Please contact us on 01299 272 777

Or Call in to see us anytime.

Friendly, Caring Environment for the Community

24/7 ROOFING & GUTTERING SERVICES

THE SPECIALIST ROOFING COMPANY

EST. FOR OVER 30 YEARS

- ✓ CHIMNEY & LEAD WORK
- ✓ FELT ROOFS
- ✓ TILING
- ✓ ROOF CLEANING
- ✓ FASCIA BOARDS
- ✓ SLATING
- ✓ SHEET ROOFING

ALSO SPECIALISING IN:

- ✓ GUTTER CLEANING
- ✓ GUTTER REPAIR OR RENEW
- ✓ RESIDENTIAL OR COMMERCIAL
- ✓ FREE NO OBLIGATION QUOTES
- ✓ DISCOUNTS FOR OAP'S
- ✓ REFERENCES Available

TEL: 01584 878728 MOB: 07977 560 763

HIS & HERS

Dog Grooming Parlour

All breeds and

Cross breeds professionally

Trimmed and Groomed



J. A. Guest

Tel: 07790 796 027

Alan Smith Aerials

Digital TV Installations.

Freeview aerials fitted and distributed around the house.

Freesat box, dish, and cable supplied and fitted. One off payment, **No contract or subscription required.**

Extra points, Repairs, New fits, Set ups, Multi room.

All work is carried out by a **Local**, fully qualified and insured installer.

01299 270007 or 07970 675728

GRANITE KITCHENS

BY FONTOURA WORKTOPS Ltd

of LEOMINSTER

BESPOKE KITCHEN & BATHROOM DESIGN
GRANITE, MARBLE, SLATE & QUARTZ

Tel: 01568 612871

Mobile: 07738 934354

www.fontouraworktops.co.uk

David Ward firewood

Do you need a dependable consistent quality supply of Hardwood and Softwood Firewood? Cut & Split to suit and delivered in breathable 1.2 cubic metre bags so no need to restack.

Small delivery vehicle fitted with crane can deliver to most situations.

David is happy to discuss your requirements.

Mobile: 07866 441154

email: david@dskw.co.uk

Happenings on High Street

THE POST OFFICE

A big change due to happen on High Street in the Spring is the withdrawal of the Post Office from its long established position in Cllr Gwilym Butler's Londis store. Regular callers there will have seen the Post Office leaflets explaining the change and the move of the facility a few metres along the road to the Singhera family's Spar Grocery.

The big plus for customers with that new location will be much longer opening hours for the Post Office service, which will be incorporated with the pay desk at Spar and open for business for much longer hours. The leaflet says that this is all part of the Government drive to improve the service, which has a fairly big budget for the overhaul of the service; something it does need, following the closure of so many offices in recent years.

Gwilym Butler's drive and investment lifted the service with its move to the town centre and now another era approaches. Our thanks to Cllr Butler for his work and best wishes to the Singhera family as they add to the service on offer to the community at a very accessible point in the town centre.

GUIDES GO, SCOUTS STAY

In what many saw as a surprise move, the Guides gave notice of their withdrawal from the Pump House at that venue's recent Annual General Meeting. This old building, down by The Wells, has been the established home for all Scouts and Guides and related children's groups for many years. To see one half of its traditional occupants move away is not good news.

We understand that the original deeds drawn up for the use of the building stated that it was for the Scouts, with no mention of the Guides. That error was meant to be addressed and corrected years ago, but for whatever reason it didn't happen. New blood in the Guides set out to redress the matter four years ago, but we are told they're still waiting for something to happen.

It's almost inevitable that what started out as a minor local difficulty that should not have happened in the first place, or been settled quickly, began to cause disputes. The Guides say they feel overlooked and the movement away from the Pump House to the Market Hall began some while ago. With the Guides' announcement the schism is complete.

Those who have gone across the road to the Market Hall will find better facilities, as you would expect in a recently restored building. The restoration work that volunteers have put into the Pump House will continue, and the awarding of a grant from the recent windfall from the sale of the Mullers site will speed it up. But what a pity that so much work and effort could not be united in a common cause.

BIG THANK YOU

The Parish Council write to offer a big Thank You to Bill White of Bill White Nurseries for donating the Christmas Tree in the town centre. What's more, the same man gave the town the tree last year. You surely know Bill's extensive place at the top of Lem Hill in Far Forest. His phone number is 266326.

And thanks are also due to Big Mower Man Alan Guest, for collecting the tree and delivering to site for a party of volunteers to get it ready for Father Christmas switching on the town's lights on December 6th. Thanks all round, in fact.

SILLY BIT

"When I Die, I want my last words to be 'I left a million pounds buried under the"



Mannerly Mutts
Dog Behaviour, Training, Walking and Sitting

- Behavioural Consultations
- Training Classes for Puppies & Adults
- One to One Training
- Fully CRB Enhanced Checked
- Walking, House Sitting, Home Boarding
- Home Security

www.mannerlymutts.co.uk
jo@mannerlymutts.co.uk 01299 270514

More Clarion Smalls. No Big Company Policies Here, Just Local People Willing to Help



Logs West Midlands

Why not buy your winter supply of firewood now to guarantee starting the winter warm with seasoned logs.

- Seasoned firewood ready to burn •
- Kindling • Heat Logs • Range of Coals •

Established Firewood Supplier
Delivered or collected (from yard on Saturdays)
Firewood cut to size required
Contact

Logs West Midlands
01299 250380 or 07736 250414
www.logswestmidlands.co.uk

Mr Chris Lewis
Personal Support and Care at Home
Over 20 years experience
NVQ qualified and DBS (CRB) checked
CALL: 079 01 91 81 31
Also on FACEBOOK

Call for a free quotation



COUNTRY SKILLS

CPCS/NPTC Approved - Fully Insured

Outside renovation, Tree Surgery, Hard
Landscaping, Slabbing and Fencing,
Decking, Roofing, Contract Mowing.

Roger Price and Sons
Mobile 07967 140720



A.B. Plastering
Plus Traditional Lime Plastering

Adrian Booton
PLASTERER

4 Severne Green, Bayton
Nr Kidderminster, DY14 9LL

Tel: 01299 832 838
Mobile: 07974 582 524



Soft Furnishing and
Interior Design Services

Masquerade

Fabrics Limited

01299 271 680

36 High Street Cleobury Mortimer near Kidderminster
Worcestershire DY14 8DQ

Retailers for Sanderson, Harlequin, Monkwell,
Crowson and many more..

Comprehensive design, measuring and fitting service

Natalie Taylor Dip CFHP MPS Pract.

Specialist Foot Health Practitioner

Specialising in:-

- In-growing toenails
- Fungal infections
- Nail trimming
- Verrucae
- Calluses
- Corns

All from the comfort of your own home.

If you would like to make an appointment,
please call on 07779 113982 or 01584 890112

Bookkeeping and taxation services

Sole Traders and Limited Companies

New/ongoing small businesses

VAT, PAYE and Self Assessments

Sage/Manual accounts

Call Annie 07812 680 570

kaya.officeuk@gmail.com



kaya accounting ltd

WADE DAVIES FLOORING
IN TALBOT SQUARE.

Look in to see what a great range
of floorings we have, all backed by
good service.

FREE QUOTES, TOO!

Call Wade on

07794 430038

Clarion Clippings - The Local News

BECKY RETIRES

Becky Keeley, Beaver Scout Leader known to her charges and friends as Beavo, has retired from the Scouting movement after 17 years of voluntary work. The Beavers Group is for boys from six to eight years old and the local colony was founded by Becky's mum Ann.

It's been a work of devotion, taking up to three and a half hours a week, plus parades and other special occasions, which Becky has fitted in around a full time nursing career. Now she's had the offer of more work and the chance to aim for promotion; with two growing sons, the priority is clear.

We watched her final meeting at The Pump House, giving the young lads freedom to express themselves, but calling their attention back when needed. A gentle, persuasive manner with a firm direction.

Looking back on 17 years in the Scouting movement, what has been her proudest moment? She thinks carefully before saying: "Seeing First Scouts move up to become Explorer Scouts at the top of the tree." She's earned the right to give more time to her own career and her sons. We wish her every success.

BOOK REVIEWS

1: 'From Clee to Eternity' by Ann and Alf Jenkins MBE.

The launch of this latest work from the prolific Alf Jenkins was in a crowded room at Ludlow College back in November and I could not get through its 288 pages in time to offer a pre-Christmas review. But it seems that a lot were sold on that first day, a testament to the high regard the Jenkins family are held in.

It's about Alf's very full life, from the 1930s in the Dhu Stone Inn through to 2014. It's a miscellany of stories and discoveries, with the school teaching element dominating; not surprising for a man who rose from novice to head teacher before deafness meant early retirement. But there are rather too many repetitive pictures of class outings and the like, just as later on there are more than enough of a cider pressing process.

That does not detract from a fascinating history of the area and revelations, like the settling of the German Alm Bruderhof people, who lived on Clee Hill until moving south to Surrey. The evidence of their time here is found in the well tended cemetery at Bromdon, near Cleeton St Mary.

The industry that employed many men on Clee Hill is described in detail, with historic pictures in support. Did you know that there was a hydro-electric scheme on the hill in the 1860s? One of the first in the country.

A book worth adding to your shelves if local history interests you at all. His website will tell you where to buy it: www.alfjenkins.com

2: 'The Enigma Machine, Bletchley Park and the Battle of the Atlantic' by Dr Mark Baldwin.

A very concise record of the development of the German Enigma coding machine and the remarkable people who broke the code. Just 16 pages of script - the author can make a detailed point with the minimum of words - to relay simple facts. The stated aim is to correct some of the very inaccurate stories told and few could do it as well and as briefly as this, giving official data in some instances to back his words. Years of giving talks on the subject have made Dr Baldwin a recognised authority on the subject. Obtainable from the author at 24 High Street, Cleobury, 01299 270110 or mbaldwin2@btinterconnect.com Just £3.00 a copy, or £5.00 for two. High standard, low price.



Electrical & Security

Tel: 07973 112463 (Anytime)

01299 489223



- Full/ Part Installations
- Existing System Updates
- Alarm & Security Systems
- PAT Testing
- Domestic and Commercial Properties
- Electrical Problems

- Landlords & Electrical Safety Certification
- Upgrades
- Free Callouts and Quotes
- For Existing and New Installations and Security.

Part P + Full Scope Registration

Card Payments Accepted



Fast Friendly Service, No Job Too Small

Another Page of Clarion Smalls

ALAN PRICE DIRECT TRAVEL

PRIVATE
HIRE
TRAVEL

AIRPORT
TRANSFERS

LOCAL &
LONG
DISTANCE,



COURIER
SERVICE

FRIENDLY &
RELIABLE

FULLY
COUNCIL
LICENSED

Tel: 01584 890014
MOBILE: 0773 3079679

Michael Coombes

Roofing & Building Maintenance.

Complete Re-roofing, Roof repairs, Pointing & Chimney repairs.
Slabbing & Brick work
Wall & Floor Tiling
Painting & Decorating

Over 20 Years experience in the Cleobury area.

Call Michael on 07854 047413

GARDEN • GROUNDS & PROPERTY MAINTENANCE

Reliable, conscientious, productive service.
References available.

Call Tom now **07779 32 86 92**

Guitar Tuition

- ◆ Experienced tutor based in Stottesdon.
- ◆ Teaching for 15 years privately and in schools.
- ◆ One to one or shared lessons, friendly, relaxed environment.
- ◆ Member of the Registry of Guitar Tutors and Musicians Union.
 - ◆ All ages, styles and abilities welcome.
 - ◆ CRB checked, full liabilities insurance.

Contact: MARK.CHECKLEY@sky.com
01746 718636 - 07708 386433

DOMESTIC GODDESS HOME SERVICES

I will tackle any job with care and pride!
I specialise in general household chores and de-cluttering of homes.

I am very reliable.

CRB checked - References available

Contact Julia anytime on
07867646574/01299 832297



LES HALL

◀Window cleaning service▶

01746 861752

—Established 1986—

Local Piano Teacher

Lessons for RSM Grades or Just for Fun.
Any Age Welcome, it's never too late to learn.

Reasonable rates

Please contact Wayne for availability

01299 266150

Computer and Laptop

Repairs.

No fix No fee

CCTV & Access Control

Jenpac ICT Solutions

01746 860297

www.jenpac.co.uk

Established 2005

Electrician

Indoor/Outdoor Lighting Specialist
Repairs and Installations

No Job Too Small, Reasonable Rates

For an Honest and Friendly Service Please Call Mathew

Part P

Approved

Tel: 01584 711553

Mob: 07974 638045



Letter from Westminster - Philip Dunne MP

I hope all readers had an enjoyable Christmas and New Year. I had a bit of break, as 2015 promises to be an exceptionally busy year for me. I shall be standing again at the General Election on May 7th, which is only 126 days from New Year's Day. I shall continue to work hard every day to make sure the voices of people in Shropshire are heard.

During the election campaign each party will set out their vision for Britain over the next five years. But the voting public will decide who we want to represent us in Westminster.

Democracy underpins our way of life. It is a fundamental part of our society, and rightly so. But there remain many countries around the world where people do not have the right to vote. Indeed universal suffrage is a relatively recent development in the long history of this country. So I hope that local residents, whichever party they support, will register to vote. This now needs to be done by each individual - check www.gov.uk/register-to-vote to do so. Having registered please use your vote. It is a privilege we should not take for granted.

Aside from the General Election there are some significant events to look forward to in 2015. God willing in September, Her Majesty Queen Elizabeth II will have surpassed her great-great-grandmother Queen Victoria as Britain's longest reigning monarch.

The Queen continues to be a symbol of unity for our nation and the Commonwealth, above party politics. Over her many years of service, she has undertaken her duties with devotion and determination, a superb exemplar of public

service to this country. The tremendous success of her Diamond Jubilee three years ago showed the massive support the Queen has from the British public.

Shropshire folk will also wish the Duchess of Cambridge well as she prepares for the birth of Prince George's sibling, due in April.

This year represents another chance for the UK to shine on the world's sporting stage. Last month, the BBC's Sports Personality of the Year competition ably displayed the excellent cadre of sporting talent Britain has to offer. Lewis Hamilton, now a double world champion, was a worthy winner.

After the remarkable successes of the London 2012 Olympics and last year's Commonwealth Games in Glasgow, this year we welcome the best rugby players from around the world as we host the 2015 Rugby World Cup. After some promising play from each of the Home Nations this autumn, each set of fans could quietly hope their team may become world champion.

I will continue to hold advice surgeries and correspond with constituents, so if you require my assistance please don't hesitate to get in contact. Please visit my re-launched website www.philipdunne.com for upcoming surgery dates and details of how to get in touch. You can also sign up for my monthly newsletter or find me on Facebook or Twitter to keep up to date with my work for the Ludlow Constituency. I wish all my constituents the very best for 2015.

Philip Dunne

TLC CARE AT HOME THE ALTERNATIVE TO A RESIDENTIAL CARE HOME
Experts in delivering the right amount of care to suit your individual needs in the comfort of your own home.

The services we can offer include:

- All staff are fully checked (CRB/DBS) & caring
- Assist with all bedtime needs
- Feeding
- Dressing & undressing
- Full personal care
- General housework
- Meals
- Prompt medication
- Monitor health & care
- 24 hour care
- And more

This may not be as expensive as you think and you may be entitled to help with funding
For information or a brochure call **01299 272897**

**Clarion Smalls - Local Skills, Knowledge and Value.
Private Businesses Giving Great Service.**

BOUNCY CASTLES Fun for all ages!
SLIDES Martin Prosser
 t 01299 401 971
 m 07956 058 828
GLADIATORS NEW! for human hamsters
Bungee Run **GIANT Zorb Balls**
SUMO WRESTLING

Dawn Chorus Leisure
 www.dawnchorusleisure.co.uk

FALCO HEATING
 The Solid Fuel Specialists
GARY HARDING - HETAS registered
 Old Hall Farm
 Clows Top
 Worcs. DY14 9HE
 T: 01299 832030
 M: 07896 685 947
FALCO HEATING@BTINTERNET.COM
WWW.FALCOHEATING.COM

T. CARTWRIGHT LTD
BUILDING, PLUMBING, HEATING AND ELECTRICAL CONTRACTOR

Specialist in Restoration and Renovation of Period Property

Oil Fired Central Heating Boiler Service,
 Repair & Installation of Systems
 11 Lower Street,
 Cleobury Mortimer
 DY14 8AA
 Tel/Fax: 01299 270725
 Mobiles: 07831 896392, 07831 896394



Tony Bullock
 Professional Carpet Cleaning

FREE QUOTES
Household & commercial
Carpets, Rugs. Deep Clean

Tel; 01299 270069
 Mobile; 07969 554833



ANDREW JELLEY OPTICIANS

Andrew Jelley BSc (Hons) FC Optom
 Teresa Davies FBDO
 Duncan Edwards FBDO
 Alex Lane BSc (Hons) MC Optom

14 Teme Street, Tenbury Wells, Worcestershire, WR15 8BA
 tel: 01584 811445 email: enquiries@andrewjelleyopticians.co.uk
www.andrewjelleyopticians.co.uk

TONE UP
LOSE WEIGHT
LOOK GOOD
FEEL GREAT!

Get going in 2015 with RDF!

Body Control Pilates™
 Free taster session!
 The Market Hall, Cleobury Mortimer
 Now on 20th January, 10.30 - 11.30am
 All welcome!
 To find out more & book your free place
 e-mail: ricdilworth@gmail.com
 telephone: 07888 080 530.



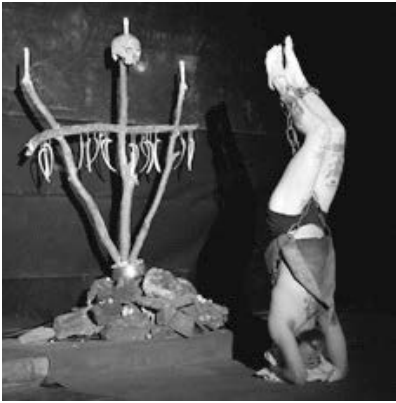

S & P PLASTERERS

- ALL ASPECTS OF PLASTERING WORK COVERED
- BUILDING WORK UNDERTAKEN
- BATHROOM & KITCHEN FITTING / TILING
- FLOOR TILING
- ROOF REPAIRS
- GUTTERING & FACIA REPLACEMENT
- POINTING
- SLABBING

CALL NOW FOR A FREE NO OBLIGATION QUOTE.....07721 783696 or 07885 504703

Clarion Clippings - The Local News

A STEP INTO THE UNKNOWN?



Make no mistake, this was a very brave venture. Joss Carter is a successful professional dancer who's performed in Europe and America, yet has found time to compose a solo work and give its debut in this small Shropshire town. In the Parish Church, no less.

The agreement was that Joss had use of the body of the church, where he would perform and provide the music and staffing for the event. 50 percent of his profit would go to the church funds. He worked hard raising sponsorship and the programme listed 23 names of people outside the church management who supported the event. He admitted later that he was stunned by the generosity of the community.

The pews were moved back, leaving dancing space in front of the pulpit. Everyone was given a stone to hold and use as an object of their tension. After a long quiet period, when tension built, a figure on all fours crept into the lighted area and crawled crablike towards the front of the auditorium. The noise that accompanied him sounded like chains.

The man emerged from his robe, to reveal that he did wear chains, binding him from neck to knees. For over an hour he

moved in tortured fashion, at one time standing on his head more than ten minutes, those chains clanking with his every move. One very moving sequence saw him self flagellating, first with his robe, then with the chains, the audience wincing at the sound of iron ring on flesh.

There was no other sound apart from the music, no speech or song, just one man who held the attention for over an hour. On the preview night a few friends were present, but on Saturday there were few seats empty and everyone we've spoken to was enthusiastic. Avant garde dance has made a new friend in this town.



The church is to be congratulated on agreeing to this performance being staged, which explored the emotions of man and his cultural worships and rituals. On a more basic level, Joss is to be congratulated for a performance that made 70 minutes feel like 30 and drew enough donations and paying customers to give the church funds a cheque for £503.25

That performance left us wondering about a seed change in the church's approach to events within that major building in the town centre. It is no longer the obvious place of worship to those outside the

faith; my wife told me about a pupil at Lacon Childe who asked her what that big building on the High Street was for. That is not a question to be mocked for its innocence, it is more a pointer to where future use of the building might be. It is, after all, the parish church and should be available for use by all.

The successful staging of 'Journey's End' was a good example. Where better to listen to the list of those who lost their lives in the First World War being read and offering a prayer - to whichever god - of thanks that we do not face such horrors today? And on December 14th there was a Family Christmas Service with very few religious items, but much hearty singing of carols and Christmas themes. It was the season of goodwill to all men and that was the feeling of everyone I spoke to, some of them never a regular churchgoer.

So if our Parish Church is going to be used more widely, for both worship and other events, the managers responsible deserve our support for having the conviction to stand up and try a new way of getting full use from a facility. If I get objections to calling a holy place a facility I'll willingly accept them as any person's right to question me. But we should not let such a fine place, whatever you choose to call it, become neglected through lack of use.

Editorial Note: Our thanks to Claire Carter for use of the photographs on this page. JR.

SILLY BIT

'Just because you don't take an interest in politics, doesn't mean politics won't take an interest in you.'
Pericles 430BC

The January Clarion Social Calendar

Date	Time	Details	Contact	Telephone Number
Thu 1		NEW YEAR'S DAY. May 2015 bring you good health, happiness and peace.		
	10.30am	Rock Pathfinders meet at Great Witley Village Hall on the A443 for a local outing. WR6 6HP or Ordnance Survey reference 725657.	Alan	01299 400304
Fri 2		BLACK WHEELIE BINS AND RECYCLE BOXES EMPTIED TODAY		
Wed 7	10.30am	Cleobury Carers Coffee Morning, Kings Arms, Church Street.	Wendy Duley	CM 270562
Thu 8		GREEN WHEELIE BINS EMPTIED TODAY		
	8.00pm	The Borders Classic Bike Club meet at The Blount Arms, Forest Park. Informal Noggin and Natter evening, all interested in classic motorcycles are welcome		
Fri 9	6.30pm	'The Coming of the Kings', a celebration of Epiphany, St Mary's Church, Neen Savage.		
Mon 12	7.00pm	Cleobury Parish Council meet at the Market Hall. The public may raise concerns in the 15 minutes Democratic Time before the formal Council meeting begins. Matt Sheehan CM 271154	Matt Sheehan	CM 271154
Wed 14	8.00pm	The Royal British Legion at The Bell Inn, Lower Street.		
Thu 15		BLACK WHEELIE BINS AND RECYCLE BOXES EMPTIED TODAY		
	10.30am	Rock Pathfinders meet at The Colliers Arms, Rock for a local walk. DY14 9HA or OS Ref: 725722	Alan	01299 400304
	7.45pm	Whist Drive at Sports and Social Club, Love Lane.	Alan Evans	CM 270114
Tue 20		Cleobury Carers possible outing to Burford House, Tenbury Wells.	Wendy Duley	CM 270562
Wed 21	7.30pm	Stottesdon W.I. have a Fun Games and Trading Stall evening at Farlow Village Hall. All are welcome.		
Thu 22		GREEN WHEELIE BINS EMPTIED TODAY		
Thu 29		BLACK WHEELIE BINS AND RECYCLE BOXES EMPTIED TODAY		
Sat 31	7.00pm	Clows Top Victory Hall presents Latin Jazz Band 'Head South' in concert. Booking Office: 01299 832456 or tickets from Brian's Butchers or the Clows Top Post Office		

Hands on Printing

**Print your own photographs on our SNAP LAB PRINTER
or we can do it for you.**

All Digital formats disc- cards or phones

Print sizes 6 x 4 5 x 7 8 x 6

Enlargements from 10 x 8 to 36 x 24 inches

Canvas prints from 16x12 to 20 x 30 inches

Prints from 35mm slides - Celebration Banners - Paper or Plastic

Most video tapes transferred to D.V.D.

Audio tapes and records to C.D.

Cine films to D.V.D.

Pass ports - Bus pass - Driving licence photos etc.

Colour Business Cards - Flyers - Raffle Tickets B-W or Colour copying

A selection of Photo Frames now available

43, High street, Cleobury Mortimer. DY14 8DQ Tele:- 01299-272757

The January Social Calendar Extra

Live The Adventure in Stottesdon are holding a 'Bhutan and Tour of the Dragon Race' evening on January 16th, starting at 7.00.

All about stories brought back from Bhutan and James Griffiths' ride in the Tour of the Dragon Cycle Race. These people do not do mediocre stuff!

Book your place with Holly on 01746 718436 or travel@livetheadventure.co

THE COMING OF THE KINGS

A Celebration of Epiphany

Dedication of
the Tapestries
of The Creation

Carols & Readings

Friday 9th January
6.30 pm

Wine or soft
drinks & light
refreshments'

ST MARY'S CHURCH NEEN SAVAGE

***Flowers By Fiona* est 1991**

Fresh Flowers made to order

Special Occasions

Weddings, Anniversaries, Birthdays

Sympathy Tributes

**19a High Street,
Cleobury Mortimer**

Tel: 01299 272 995



www.mccartneys.co.uk



www.phippsandpritchard.co.uk

Prospect House - Clee Hill

Prospect House is a detached property located on the B4214 between Clee Hill and Tenbury Wells (5 miles away). The town of Ludlow is also 5 miles away. With 4 bedrooms and 3 reception rooms the property also has a building plot with planning permission for the erection of a 4 bedroomed property. Energy Rating E



O.I.R.O.
£295,000

46-47 High Street - Cleobury Mortimer

A Large town house situated in the sought after village of Cleobury Mortimer in South Shropshire. This character property dates back to the 17th Century and provides plentiful and spacious living to accommodate the largest family and would even be suitable for multi-generational living with its 6 bedrooms and four bathrooms this property has to be viewed to be appreciated. Energy Rating F



O.I.R.O.
£299,950

New Buildings - Clee Hill

This mid-terraced property is located in Clee Hill. Comprising 3 bedrooms, kitchen/diner, lounge, bathroom and rear garden. Benefiting from double glazing throughout, oil fired central heating and spectacular views over the surrounding countryside. Energy Rating D



O.I.R.O.
£125,000

Tannery Court - Tenbury Wells

7 Tannery Court is a well presented town house located within walking distance of Tenbury Wells town centre. Having been maintained and improved by the current owners to provide comfortable accommodation over two floors. Energy Rating D



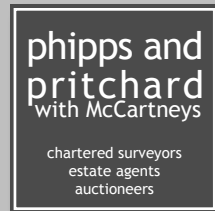
O.I.R.O.
£189,950

78 High St. Bridgnorth Shropshire WV16 4DS
Tel: 01746 767488 Fax: 01746 767081
email: bridgnorth@phippsandpritchard.co.uk

31 Worcester St. Kidderminster Worcs DY10 1EQ
Tel: 01562 822244 Fax: 01562 825401
email: sales@phippsandpritchard.co.uk



www.mccartneys.co.uk



www.phippsandpritchard.co.uk

Swan Court - Burford

21 Swan Court is a modern, end terraced property located in Burford, within walking distance of the market town Tenbury Wells. With accommodation to include: 3 bedrooms (2 doubles), family bathroom, living room (with electric fire), kitchen/diner and downstairs cloakroom with WC. Energy Rating C

NEW



O.I.R.O.
£153,250

Pembroke Avenue - Tenbury Wells

17 Pembroke Avenue is a two bedroomed ground floor flat located within walking distance of Tenbury Wells town centre. Offering a good opportunity for first-time buyers or investors. Energy Rating F

NEW



O.I.R.O.
£119,000

Old Bowling Green Close - Burford

This 4 bedroomed, semi-detached, high standard property is located in a cul-de-sac location in Burford; just a 5 minute walk from Tenbury Wells the property is ideally located close to the local amenities. Built in approximately 2001 the property benefits from double glazing throughout, gas central heating, ample parking and garage. Energy Rating D

NEW PRICE



O.I.R.O.
£189,950

The Cottage - Mamble

Detached character four bedroom family home. Set on a generous plot which includes a detached double garage with accommodation above, front and rear gardens and ample parking. Energy Rating D



O.I.R.O.
£470,000

44 Teme St. Tenbury Wells Worcs WR15 8AA
Tel: 01584 811999 Fax: 01584 819464
email: tenbury@mccartneys.co.uk

38 High St. Cleobury Mortimer Worcs DY14 8DQ
Tel: 01299 270301 Fax: 01299 270411
email: cleobury@mccartneys.co.uk

Paul Harding



Tree Services

- Tree surgery and felling
 - Woodland thinning & maintenance
 - Hedge trimming & grass cutting
 - Supplier of hardwood logs, kindling and garden bark
 - NPTC certified fully insured. Domestic and commercial work undertaken.
- Tel 01584 890 993 Mob 07970 878 224

Mawley Oak Travel Tours 2015

Spring Break to Llandudno

5 Day Break
13th to 17th April
£230 per person, sharing a double/twin room
£245 per person Single room



Turkey & Tinsel Break Llandudno

4 Day Break
27th to 30th November
£175 per person, Sharing a double/twin room
£185 per person Single room

Want more information? Give one of us a call on 01299 270207 for free Information on your perfect Break away.

Visit our website www.mawleyoaktravel.co.uk

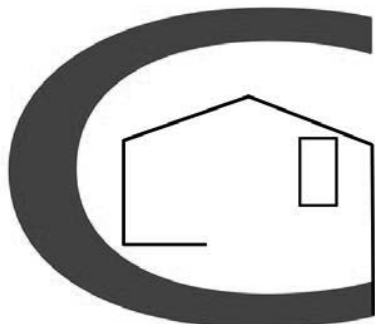
Your Local Garage for Servicing and Repairs

MOT'S TYRES, SERVICING & REPAIRS

Fuel Sales, Red Diesel, Gas Cylinders, Forecourt Shop, Motos, Repairs & Servicing, Exhausts, Special Offers on Tyres, Clutches, Shock Absorbers, Cam Belts, Diagnostics. We offer a local collection & delivery service. Courtesy car available * (* conditions apply)

www.mawleyoakgaragesltd.co.uk

Tel Cleobury Mortimer 01299 270207



Chris Stokes

**Roofing &
Building**

www.proroofer.co.uk

tel: 01584 890069

mob: 07853 461290

Clarion Clippings - The Local News

CLOWS TOP GARDENING CLUB

January – New Year, New Start. Start making plans for the year ahead. Flicking through seed catalogues and making notes about changes to your garden to improve the look. If you have workable ground you can still plant bare root roses, trees, fruit bushes and hedges.

Harvest your winter vegetables this month. If you've indulged over the Christmas season, use your them to make wonderfully thick warm soups. When the weather allows, prune deciduous trees, shrubs and fruit trees; it must be done before the first signs of spring.

In the colder spells don't forget our garden birds. Food is in short supply this time of the year and they need our feeding stations to survive the cold. Garden Tools are often taken for granted. Now is the time to get them cleaned, sharpened and oiled, ready for use in the Spring.

Gardening is one of the few hobbies that are relaxing, enjoyable and rewarding. Our Club has a very friendly atmosphere, where everyone is welcome. A great way of exchanging knowledge, learning new ways of doing things and sharing tips. Non-members welcome to any meeting.

Our first meeting of the year will be on January 28th, when Danny Arnold will give a talk and demonstration on Teme Valley Wildlife.

We meet on the fourth Wednesday in the month at Clows Top Victory Hall. Doors open 7.30pm, for the speaker at 8.00 o'clock. Admission: Members £2, Non-Members £4.
Pauline Bowen

KINLET FAMILY PLAYGROUP

Happy New Year! We have all enjoyed a lovely festive break and are raring to start a fresh new year. Playgroup returns on Monday January 5th for the Spring term; our sessions are busy but we do have spaces available. If you are looking for a place for your child, please contact 07794 166514 or email info@kinletfamilyplaygroup.co.uk. We take 15 hours of funding for children aged 3 up and also for 2 year olds who meet the 24U criteria.

Our first 'Little Tiddlers' session will take place on Thursday January 8th, from 9.30 to 11.30am, children from birth with a parent or carer, £2.50 per session. As our sessions are busy, please let us know if you plan to attend via text, phone call or email.

Zoe Pearson

FESTIVE SHOP SUCCESS

The Festive Shop at the Fighting Cocks in Stottesdon on December 4th was a great local successes on an evening when a big cheque was handed over to the Severn Hospice from fund raisers from both Stottie and Cleobury. This was the product of a year of events and Severn Hospice Vice Chairman John Fairclough was happy to receive a payment of £2,500 towards the charity's vital work.


John was full of praise for the efforts of people like Festive Shop organiser Diane Newsham and to Sandra and Malcolm of the Fighting Cocks for their untiring support, plus all the volunteers who make the charity and its Cleobury shop such a success.

The action doesn't stop with one presentation. When the evening was over and the taking counted, with donations and the sale of mistletoe taken into account, the evening had raised a whacking £618.24. A rattling good start to next year's fund raising.

SILLY BIT

'When I get old, I'm going to move in with my kids, hog the computer, pay no bills, eat all the food, trash the house, and when I'm asked to clean up a bit, I'll throw big tantrum.'

'I really think tossing and turning at night should count as



Luxury for your cat, peace of mind for you

- Vaccinated cats only
- "cuddle time" spent with every cat, every day
- Individual likes & dislikes catered for
- Inspection invited
- The cattery of "First Choice"
- Tranquil environment
- Family units for cats from the same home
- Protected by security system
- Full height sneeze barriers
- Spacious, heated chalets
- Bright & airy
- Completely protected from the weather
- Spotlessly clean

Catsley View, Meaton Lane, Kinlet, DY12 3DD, call 01299 841 270

Do you suffer discomfort from:

- Corns •Callus/Dry skin •Thickened nails
- Verrucas •Athlete's foot •Ingrowing toe nail
- Being unable to cut your own nails

Also provide:

- Complete foothhealth check •Medical pedicure
 - Foot massage •Evening and weekened treatment available
 - Free Vascular check of the foot
- 20 years experience**



For professional treatment of foot related problems at my surgery, your workplace or in the comfort of your home

Contact IRENA
01299 841277
07795 958186

The Old Farm House, Button Bridge, Kinlet
DY12 3AW •email: hessins@gmail.com
Irena s.a.c.dip.(Dist). f.h.p.p. n.c.f.e. r.f.h.p.



Teme Valley Computers Serving your home and small business computing needs

Computer Repair



Onsite Service

No callout fee

- My Services include
- Troubleshooting problems
 - Networks, wireless and wired
 - Data recovery
 - Virus / spyware prevention and removal
 - Security setup / password recovery
 - Backup services
 - New System setup
 - Child safety setup
 - System upgrades / housekeeping.
 - Remote support 24/7
 - Software setup and interation



Small Business IT Support - rural business

Designed for the smaller company that does not have dedicated IT support but needs someone on-call to provide that professional support level that ensures your business is always able to respond to its clients.

- Computer setup , configuration and maintenance.
- Networking (Wifi & Cabled) setup and support
- Printer setup and maintenance
- Continuity, backup and recovery services
- Business Process Reengineering
- Onsite and remote support
- Onsite training
- Website design and support
- Surveillance systems
- Technology integration



01299 271571 mark@temevalleycomputers.co.uk 07980 488892

www.temevalleycomputers.co.uk 

BLOCK ARCHITECTS

Clee View Raveney Wood Cleobury Mortimer Kidderminster Wore

Whether it is a new build project, conversion or extension we provide creative and sustainable architectural design solutions from sketch design to completion

If you require assistance or advice on any building or planning related matter, please feel free to call me



Tom Rogers



BA(Hons) Arch PG(Dip) RIBA

T 07812 198 967



E tom@b3a.co.uk

W www.b3a.co.uk



Oilspill Cleanups Company Ltd

UKSpill and Environment Agency accredited
Domestic and commercial oil tank services

including free tank inspections new tank and tank base insulations, tank security checks and anti theft devices fitted. We have over ten years experience working in the insurance industry reinstating domestic and commercial land enabling us to offer comprehensive landscaping services ranging from laying patios and block paving to a complete re model. We can also offer patio block paving and decking cleaning services. We also supply absorbents and spill kits tailored to your specifications and offer training on how to use them.



A small example of previous work.

24 hour emergency call out for domestic or commercial leaks or spills

For all inquiries call 07969 554833
 or email templemarc@googlemail.com a portfolio of previous jobs available on request.

The Farming Page - Jenny Everingham writes from the warmth of the Farmhouse

At the time of writing, all Christmas preparations would be completed in your average fairytale farmhouse, and the jollifications would be presided over by the apple-cheeked farmer's wife, wreathed in smiles and a pristine apron, as she whisked the final half-hundredweight of home-made mince pies from the kitchen range! Dream on! The guests are almost at the doorstep and I am contemplating moonlight shopping at Sainsburys. I used to be so organised, but somehow real life keeps getting in the way! Nevertheless, by the time you read this all food will be eaten, all presents unwrapped, all carols sung and, with luck, all happy guests returned home safely. Next year I will start earlier! I hope you all had a good time.

So, how is the countryside looking as 2014 turns into 2015? At the moment, muddy! I'm surely not the only one finding car-cleaning a waste of time? All the cattle are in now, so the damage to the grazing is minimised. The sheep are out all winter, but have plenty of space, and tread it up less with their daintier hooves. Careful positioning and frequent moving

of feeders as the winter wears on helps too. There seem to be plenty of berries about for the birds at the moment. Fingers crossed for only a few picturesque flurries of snow, and an early spring. (Don't tell the grandchildren I said that!)

As we don't go in for early lambs, the first weeks of the year fall into a quiet routine of feeding and bedding down the cattle on straw in the byres, and no doubt some new calves making an appearance. Checking the sheep daily is a good excuse for a bracing walk on a clear, frosty morning. There's a chance for some hedging and other jobs if the weather is kind, but the days are short so progress can be slow. As usual, everything depends on the weather. There's no way of predicting how the economics will turn out, but farmers are a notoriously dogged lot, so here's hoping their faces are all smiles by Easter.

A happy and prosperous New Year to you all!

Jenny



MARCHES
PEST CONTROL

Pest control and wildlife management
Domestic - Commercial - Agricultural

Geoff Jordan

BPCA Qualified for all insects, rodents and wildlife

Mobile: 07971 866564

Email: info@marchespestcontrol.co.uk

Web: www.marchespestcontrol.co.uk

We cover: Cleobury Mortimer, Ludlow, Tenbury Wells, Leominster, Kidderminster, Bewdley, Bridgnorth, Worcester and surrounding areas

E.PURSLOW & SON LTD

Stone, Gravel, Cement Supplies

Approved Coal Merchant

Calor Gas Stockist

Tarmacadam Specialists

Car Parks and Driveways Constructed

01299 270314

Health Professional
Registered Chiropodist



Janet Manley

MSSCh. MBChA
BSYA(reflex) Reiki Master

Specialist in Reflexology & Reiki Healing

Cleobury Mortimer based **01299 272841**

Home visits 15 mile radius **07805 268439**

CLEOBURY MORTIMER PARISH HALL

Church Street. Cleobury Mortimer

"Flicks Night": Saturday December 13th,
when the film will be "The Nativity".

**Sunday December 14th: Cleobury Mortimer
Concert Brass's Christmas At Home.
Come and listen to the pride of the town.**

**TO BOOK THE HALL, CALL DAVE ON 01299 271070
THE TOWN'S TOP VALUE VENUE**

We Gleam

We Gleam is a high-quality well-established carpet & upholstery cleaning service in the Wyre Forest area, for both **domestic** and **commercial customers**.

We use only the most advanced, quick-drying soil extractors. If you've got a stubborn, unsightly stain on your carpet or upholstery then call in the **We Gleam** specialists.

- ✓ Local family-run business
- ✓ Fully trained with years of experience
- ✓ Stainshield treatments available
- ✓ We move all furniture
- ✓ Hundreds of satisfied customers
- ✓ Commercial work undertaken



Call Pete 07961 712 683

Clarion Coppers with CPSO Nick Morris



At the time of writing there have been six reported incidents since those in the last issue. Overnight on December 7th/8th two sheds in the grounds of Kinlet C of E Primary School were broken into. Nothing was stolen but £60 worth of damage was incurred.

Overnight on December 9th/10th the wooden fence along Bull Alley suffered yet more criminal damage. This damage, perpetrated by empty-headed idiots, has occurred several times over the last couple of years, and the Police and the owners would be grateful if someone would come forward with information about this. During the same night there was a burglary at a portacabin on an industrial unit on Clee Hill Road, Burford. A brand new red Hilti reciprocating saw, a laptop computer and a small amount of cash was stolen. CCTV footage of the area is currently being looked at.

Since the present occupiers of the old Three Horseshoes building have been there, lettering and numbers fixed to the wall have regularly been interfered with and damaged. Although there is no proof it is thought that one or more of the youngsters who gather in that area from time to time may be responsible. The latest of these incidents happened between November 17th and 19th.

There was a road collision recently at the junction of New Road and Lower Street. Nobody was seriously injured, but one of the drivers is being dealt with for possession of cannabis. It is being investigated whether being under the influence of drugs was a factor of the cause.

An elderly resident of Burford who lives in sheltered accommodation has been disturbed on lots of occasions during the last four months at various times during the night by someone unknown knocking at her door. Obviously she

does not answer the door, but it is very worrying for her. She now has a security light and CCTV with the hope of deterring this person, or identifying who it is.

At times when it is very cold, it is noticeable how the number of road collisions escalates. Very often motorists are not aware that the road may be slippery - even when it has been gritted. In icy or wet conditions drivers need to allow more room between them and the vehicle in front, and to minimise skid risk they should drive more slowly and avoid braking sharply and accelerating quickly. Sound advice is given regarding all the safety checks which should be done before driving. Before each journey it should be ensured that tyres are inflated to the correct pressures and are not damaged. All lights should be checked and bulbs replaced if necessary. All windows, mirrors and lights should be free of ice for good visibility, and the screenwash bottle should be topped up. To be as safe as possible motorists should always be aware of the extra hazards and act accordingly, and try to anticipate what other road users might do. They should also be aware of the possibility of being dazzled by bright sunlight at this time of the year when the sun is low in the sky in mornings and late afternoons. The sunlight can be momentarily blinding which can cause danger to pedestrians, cyclists, motor cyclists, horse riders and other motorists from drivers affected. As a reminder, be careful when defrosting windscreens and warming your vehicles up, not to leave them unlocked and unattended. Many vehicles have been stolen in this manner by thieves on the lookout for such opportunities.

Nick Morris



LACON CHILDE SCHOOL

the future begins here

Headteacher: Darren Reynolds



Lacon Childe School, Love Lane, Cleobury Mortimer, DY14 8PE

Tel. 01299 270312

email - admin@lacon-childe.org.uk

THE IRON LADY

JEAN BASHAM – COMPLETE LAUNDRY AND IRONING SERVICE
“FROM DIRTY AND MESSED TO CLEAN AND PRESSED”

- I offer a friendly and reliable service right on your doorstep
- No job too big or small – anything from one single item to B&Bs and hotels
- Established for 15 years, and still the **LOWEST RATES** and **BEST SERVICE** in the area
- Large capacity machines mean I can service quilts, curtains, sleeping bags, tablecloths and other large, heavy-duty items



- Now offering a repairs and alterations service too
 - NEW Specialist stain remover service now available
- CALL 01299 271 546 OR 077920 813 774**
EMAIL JEANTHEIRONLADY@GMAIL.COM



07971 361901 or 01299 832484

Complete Bathroom Installations
Bathroom Refurbishment or Repairs
Wet Rooms
Professional Wall and Floor Tiling



For a quality and guaranteed service, call Stuart for a free quote
Highly Recommended / References available - see my reviews on www.freeindex.co.uk

FOR THE BATHROOM YOU DESERVE!

BoomeranG of Cleobury Mortimer private hire travel

- Friendly, reliable service
- Local & long distances
- Fully council licensed (up to 12 passengers)
- Airport transfers
- Courier service
- All occasions catered for

Tel: 01299 271257, Mob: 07411 142755, Email: stuart.boomerang@yahoo.co.uk



**Registered
Technician**

30546

JOHN VAIL

Plumbing, heating and bathrooms
Installation of boilers, cookers and gas fires
In homes, park homes and caravans
Boiler servicing and landlords' certificates

GAS LPG OIL

Gas Safe and OFTEC registered

07971 624804

01584 890946

johnvail123@btinternet.com



536724

Clarion Clippings - The Local News

OH DEAR, IT'S THE BUSES AGAIN

On the buses or 2L and back...

A few days after our previous failed attempt to take the bus to Ludlow we tried again. Mistake. The outward journey was OK – only about 10 minutes late. Did our shopping, returned to the bus stop and waited for the return service. And waited and... It finally appeared about 25 minutes late. No explanation why but better late than never or so we thought. All went well until just after Clee Hill village when the bus slowed to walking pace and expired. The driver then had a lengthy discussion with the workshop manager which involved him tinkering with the engine. He rang the workshop back to tell them no go but by then they weren't answering the phone. Eventually, he did make contact but announced that the problem was terminal and that a breakdown lorry was being sent.

During the conversation he did tell his colleague that we had 'flown' up Angel Bank. This was true if your definition of 'flown' is any speed greater than walking pace.... Just then, the next service to Ludlow arrived in the opposite direction and offered to take us there and back

again. Strangely, no-one took up the offer. Having seen that the Doddington Christmas Fair was about to start, we decided to walk there to get something to eat and then catch the next Cleobury bus. It had been a long time since breakfast and by now we were about to eat our own arms.

Luckily this proved unnecessary as friends driving past saw our predicament and gave us a lift. Thanks to Pete and Sarah we only arrived home about an hour late. (Just a thought for anyone who may read this: should you see us walking along the verge anywhere between Kiddy and Ludlow, we are NOT doing this for pleasure so kindly stop and give us a lift). Next time we will take a Red Cross parcel with us just in case.

Boring statistics section: In 2013, the West Midlands was the only region in the UK with less than 80% of buses arriving on time having a score of around 75%. In 2011, the average spend per head on public transport infrastructure in London was £2731. In the West Midlands it was £269. I wonder how much of that reached Shropshire. In Cambridge, pensioners who want to use the 9.30 bus into the town centre are made to wait at

the back of the queue until 9.28 and have been nicknamed Twirlys by the drivers as they are 'twirly' to use their passes. Back in Cleobury the other morning, a group of people were huddled at the stop when the bus arrived spot on 10.00am. Shame it was the 9.10 service which had broken down on Angel Bank.

Still no news on printed timetables although perhaps 'timetable' is not a true description for the document in question. Think of it more in terms of a long range weather forecast which predicts events that may occur sometime in the future rather than anything that might actually happen. I have now had a letter from Shropshire Council dated 3 December accepting that things have not been handled well but claiming that the £1 charge issue has been sorted. However, this was still in force on December 8th so we shall see. Apparently our service meets the Council minimum standard although services elsewhere in the County may be better due to the level of demand or commercial decisions made by the operator. This might be true if the service was reliable so further work needed in this area.

Steve Todd

TDC CARPENTRY SERVICES

- Fully insured qualified professional
- Excellent workmanship and quality customer care
- From hanging doors, fitting kitchens to bespoke projects

Tim Clare - 01299 270568 / 07890 519980



Cleobury Mortimer Primary School

We are a school with strong local community links

OFSTED SAYS:

- Highly committed leaders and managers
- Pupils achieve well because they are well taught and have positive attitudes to learning
- Pupils enjoy lessons, behave well and say learning is fun
- Good care, guidance and support provided for individuals
- Strong team of staff and governors
- Exciting topics
- High proportion of pupils take part in extra curricular activities

CONTACT DETAILS

Cleobury Mortimer Primary School

Love Lane, Cleobury Mortimer, Nr Kidderminster,
Shropshire, DY14 8PE

Tel: 01299 270313

Email: admin.cleoburymortimer@shropshirelg.net

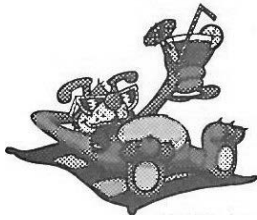
Website: cleoburymortimerprimaryschool.ethink.org.uk

The Clarion Weekly Social Calendar

Day	Time	Event	Contact	Phone	
Sun	08.30	Holy Communion, Parish Church		CM 270624	
	09.45	Parish Communion, Parish Church		CM 270624	
	09.00	Mass, St Elizabeth's, Lower Street	Canon Walsh	01584 872906	
	10.30	Cleobury Country Archers, Lacon Childe Sports Field	Lesley Burnside	CM 271374	
	10.30	New Life Church – for venue call	Derek Morris	CM 270787	
	11.00	Morning Service, Methodist Church	Rev H Roberts	01584 819649	
Mon	08.00	Kinlet Family Playgroup, Kinlet School Mon to Fri		07794 166514	
	08.00	Chorley Family Playgroup, Stottesdon School Mon to Fri	Zoe Day	01746 718769	
	09.00	Peter Rabbit Nursery, Lacon Childe School Mon to Fri	April Rogers	CM 271418	
	09.00	CM Playgroup, Primary School, Mon to Fri	Jane Preece	07816 193933	
	09.30	Morning Workout, Sports Hall	Deena	CM 271317	
	10.00	Age UK, Monday Club, St Mary's Place	Sarah Wilde	CM 272638	
	15.45	Gym Club with Ann Davis, Lacon Childe Mon & Wed	Don Carter	CM 270312	
	17.30	Cubs Meeting, Old Pump House, Church Street	Kate Pearce	07772 102986	
	18.30	Karate Club, Lacon Childe School	John Nelson	CM 879210	
	19.00	Tai Chi Class, Lacon Childe School	Rose Jacks	01584 875544	
	19.30	Rangers Meeting, Old Pump House, Church Street	Helen Smith	CM 270912	
	19.45	Bingo, CM Sports & Social Club	Alan Evans	CM 270114	
	20.00	Women's Clog Dancing Classes	Linda Small	01746 718624	
	Tue	10.00	Nippers, Moths & Tots, Methodist Hall, Church Street	Emma	CM 272959
14.00		Friendship Club, Parish Hall, Church Street	Janet Rolston	CM 270353	
15.45		Ballet Class, Lacon Childe School	Liz Broadway	CM 251246	
17.00		Sports Roundabout, Sports Hall, Love Lane		CM 271317	
17.30		Beavers Meeting, Old Pump House, Church Street	Becky Keeley	CM 271416	
18.45		Bridge Club Hopton Wafers Village Hall	Wendy Duley	CM 270562	
19.00		Bell Ringers' practice night, St Mary's Church	Liz Walker	CM 271808	
19.30		Chas Beale Dance Club, Lacon Childe School	Betty Ladek	CM 270332	
Wed		10.30	Over 50s Relaxing Exercises, Doddington Village Hall	Freda Childe	01584 891180
		16.45	Gym Club for 6 & over, Lacon Childe School	Don Carter	CM 270312
		17.15	Brownies Meeting, Old Pump House, Church Street	Rebecca Barnes	CM 272945
	19.00	Guides Meeting, Old Pump House, Church Street	Dorothy McBride	CM 272717	
	19.00	Yoga Class with Anna, Lacon Childe School	Don Carter	CM 270312	
	19.00	Zumba Class with Emma Forni, Lacon Childe School	Emma Forni	01746 862842	
	19.30	CM Concert Brass Band practice, Parish Hall	Debbie Fowler	01562 743304	
	19.30	New Life Church prayer meeting. For venue call	Derek Morris	CM 270787	
19.45	Choir Practice, Parish Church	Philip Engleheart	CM 270627		
Thu	09.30	Little Tiddlers, Kinlet Family Playgroup, Kinlet School	Zoe Pearson	07794 166514	
	14.00	Scrabble Club, St Mary's Place, Non residents £1.00	Jo Booton	07969 104808	
	16.45	Cleobury Comets Netball, CM Sports Centre term time	Mandy Smith	CM 271809	
	17.30	Brownies Meeting, Old Pump House, Church Street	Rebecca Barnes	CM 272945	
	19.30	Tums and Bums, Lacon Childe School	Don Carter	CM 270312	
	19.30	Adult 7-a-side Football League, CM Sports Centre	Dave Hinves	CM 271317	
	14.00	CM Bridge Club, Parish Hall, Church Street	Pat Smith	CM 270592	
	20.00	11-16s Badminton Club, CM Sports Centre		CM 271317	
	21.00	Over 16s Badminton Club, CM Sports Centre		CM 271317	
	Fri	10.00	Tiny Stots, Chorley Playgroup, Stottesdon School	Zoe Day	01746 718769
10.00		Tiny Tots, Parish Hall	Bettina Poole	CM 271868	
17.30		Rainbows Meeting, girls 5-7 years, Old Pump House	Jean Basham	07792 813774	
19.00		Scout Meeting, Old Pump House, Church Street	Chris Andrews	CM 270937	
20.00		Badminton, CM Sports Centre		01584 881359	
Sat	10.30	Junior Coaching, CM Golf Club, Wyre Common	Phil Moore	CM 271112	

Wild Meadow Boarding Kennels

Give your dog a holiday



- Guaranteed Daily Walks
- Heated & Air Conditioned
- Licensed & Insured

Call Kate & Rich on 01584 890327 or 07967 491428

Opening hours: 8am-11am & 4pm-6pm

Hopton Bank, Cleobury Mortimer, DY14 0QF



Shropshire Quads

www.shropshirequads.co.uk

Your local ATV specialist.

 POLARIS

 OSET

 KYMCO

Phone: 07904 484 492

Email: dave@shropshirequads.co.uk



Professional Dog Grooming Jackie Beddoe

Tenbury Road, Clee Hill, Ludlow, SY8 3NE

Tel: 01584 890 532

Mobile: 07891 887 578



We control:

Insects Rodents

Mammals Birds

Electronic fly killers
supplied & fitted

Mobile: 07890 048 362

**WYRE FOREST
PEST
CONTROL
AND
WILDLIFE
MANAGEMENT**



All work guaranteed
No call out charge
Discount for O.A.P's
Free survey and quotation

Office: 01562 747 210

www.wyreforestpestcontrol.co.uk

Linda Iles

January In The Wyre Forest



Katie, one of a happy band who completed a recent Uncllys Farm woodworking course.

Has the forest ever inspired you to draw, paint or write a poem? I'm sure it has for many of you even if, like me, you only get as far as the odd line or idea and your good intentions come to nothing. Despite being fantastically rich in history, pre-history, biodiversity and local culture, the Wyre Forest has little to show in terms of published writing or exhibited art. There are exceptions: two that come to my mind are the charcoals and pastels of Bewdley's Clare Spencer and 'Far Forest' by Victorian novelist Francis Brett Young. Keep an eye on 'Bewdley Open Studios' and poetic outpourings by budding writers, young and old.

This year Uncllys Farm will be hosting a range of courses to help people manage the countryside and be creative. This was part of the plan long ago when John Ruskin (a man of great insight, vision and artistic gifting who has been dreadfully misrepresented in recent

films) set up the Guild of St George and his followers began a Utopian settlement here in the Wyre Forest devoted to working the land, culture and education for everyman. Ruskin's own studies of natural objects and scenes were amazingly detailed and accurate (no short-cuts for him) and if you visit the Studio take a look at his picture of a kingfisher's feather.

We may not venture far into fine art, but there may be something more basic which appeals to you. On January 23rd Wade Muggleton will be teaching Hedgelaying – a true countryside craft which is used to keep hedges growing and stock-proof indefinitely. Ring 01299 488083 for information. A small group of us have recently completed a woodworking course under Wade's patient eye to produce a child's chair from local oak and walnut. Wood is a new material for me and I was delighted to be able to learn, or start to learn, the use of unfamiliar tools such as band saw, plane and spoke shave.

Meanwhile what can you see in the forest in January? The winter woods present a simple picture uncomplicated by the tangle of summer growth. Easier then to see the odd daisy or white dead nettle, spot fungi or note the first green buds on honeysuckle. Is there a fallow deer looking back at you? Will the winter silence be broken by the song of a mistle or song thrush, beginning to establish a breeding territory? And maybe there'll be snow, which brings out the child in all of us!

Linda Iles

Newbridge Computer Services Tel: 01299 270701

- ★ Want a new computer?
- ★ How to set it up?
- ★ Worried about what you need?
- ★ How to transfer your data?

Well help is at hand!

We offer a complete service package with all our new computers to ensure you get exactly the right system, at the right price and completely hassle free from start to finish.

Buying a computer system from us couldn't be easier!

Also:
Spares & Repairs
Internet Connection
Security: Anti-virus etc.

Suppliers of  Computers

E-mail mike@ncs-tech.co.uk

And:
Call out & onsite Repairs
Accessories
Wired & Wireless Networks

website: www.ncs-tech.co.uk

Wild at Heart Flowers

Still planning your wedding flowers? Dates still available.

10% Discount of all Church Flower orders

All Sundries available

Help and Advice available as to help you arrange your own

~Wedding consultations specially created to your preference to suit you!~

- Traditional and creative arrangements of all styles
- Beautiful bespoke hand tied
- Natural, designed and sculptured Funeral Flowers

"All with your own personal involvement to make them unique and your own"

Don't forget for a lovely gift, 'Flowers are Fat Free'!

~Flowers~



Tel. Rachael on 01299 272 638

at her well stocked shop situated at Mawley Oak Garage.

www.wildatheartflowers.com



& HETAS Stove Installer

- ✓ Prompt, reliable & friendly service.
- ✓ Cows and Chimney Pots fitted.
- ✓ Fully qualified and fully insured.
- ✓ Guild certificates issued after every sweep.
- ✓ HETAS Approved Installer.



Call Eddie Tel. 01299 382222 / 07895 612915

www.elitesweeps.co.uk



Cleobury Garage

15b High Street, Cleobury Mortimer. DY14 8DG

Opposite Lloyds Bank

- M.O.Ts on cars, motor bikes and small commercial vehicles
- Tyres, Tyre fitting, Puncture repair and Tracking.
- Diagnostics, Air conditioning
- Welding.
- Service and Repairs to most vehicles.
- Delivery and Collection Service Available



FREE WINTER CHECK WITH EVERY M.O.T THIS NOVEMBER & DECEMBER!

Contact The Team at Cleobury Garage on: 01299 270352

Clarion Clippings - The Local News

CLEOBURY COUNTRY MOVES ONWARDS

Cleobury Country has updated its website at www.cleoburycountry.com. It now offers information on three areas of interest, to make pinpointing your needs easier.

Cleobury Life is about facilities in the local villages and Cleobury itself, to help you find somewhere to visit, take a guest to lunch or find somewhere to stay. All that and the local interest groups, from the W.I. to the history society.

Cleobury Business lists local businesses in both alphabetical order and categories. Anyone who's lived here for a few years will know that there's a big network of services nearby, and this listing makes it easy for the newcomer to find help. You do have to scratch hard to think of something that can't be done here in Cleobury Country.

And finally there's the Farmers' Market section, which lists the regular stallholders who grace Church Street every month, with details of what they produce, where they operate from and how to contact them.

There are also community and business blogs on site, where you can air your views on local matters. You have to wonder

about that one and hope that it will be carefully controlled. We did have an active Neighbourhood Watch Facebook page until it was misused for a one-man whingeing campaign and was closed down. Let them know what you think of the revised version on business@cleoburycountry.com

COULDN'T RESIST THIS



It was December 6th and Father Christmas was giving the reindeer an airing by calling in at the Christmas Fair in Cleobury. On his way, he stopped to borrow a proper handbell from Reg Chapman, taking along Senior Elf Steve Todd to check the bell over.

Just as they came out, they were waylaid by John and Cherry Preece, who wanted to let Santa know what they'd like on the 25th. The old chap could probably find a rusk for the baby, but John looks a little more demanding.

CLEOBURY TOWN JUNIORS FOOTBALL

Martin Coombs reports:

Prior to our home match on December 7th, Cleobury Town Juniors Under 15s took a joint team photograph with the Worcester Lynx Under15s.

This was to commemorate the Christmas Day 1914 football match and teams nationwide have been asked to undertake this and post pictures to footballremembers.com for eternity.

A thrilling match followed, with Cleobury coming from behind three times to win 4-3. It was really memorable.

Martin

NICE CHRISTMAS PRESENT - NOT

Some kind soul, obviously a country lover, dumped an old armchair over the hedge at Clarvers on December 16th. Sarah Barnsley tells us there was a sofa dumped just above the Blount Arms the same day and a fridge on the road past Pains Farm at Far Forest. The Christmas Spirit not at work there, then.

With cutbacks on rubbish collection budgets we sadly have to expect this. Keep your eyes peeled and try to get a registration number, then the police have a chance.

Amanda Horton Mobile Computer Services

Tel: 01299 269167

Email: mandhorton@gmail.com

Text: 0796 461 4185

OVERWHELMED BY TECHNOLOGY AND DON'T KNOW WHERE TO START?



- Keep in touch using social media & email
- Researching family history
- Shopping
- Banking

I offer computer lessons and services in the comfort of your home and can walk you through at a pace that suits you

Reasonable hourly rates

Members & Guests
Always Welcome

CLEOBURY MORTIMER SPORTS & SOCIAL CLUB WINTER ENTERTAINMENT PROGRAMME



BECOMING A CLUB MEMBER

For just a small annual membership fee, you can enjoy:

- Live entertainment on your doorstep
- Discounts on tickets for entertainment
- Large Screen TV, broadcasting Sky Sports
- Hire of the facilities for private functions
- Support local charities and Sporting Clubs

PRIZE BINGO
Every Monday at 8pm



Annual membership prices remain unchanged since 1996.
Membership runs from 1st April to 31st March.

Various membership options are available:

Family Membership	£5.00
Individual Membership	£3.00
Senior Citizens Membership	Single £2.00 Joint £3.00

SPORTS & SOCIAL CLUB IS THE HOME OF CRUVO

CRUVO is a self-governing group of members from the Rugby, Cricket and Volleyball clubs, combining together to raise funds for their individual clubs and the sports & social club.



SUPPORTING LOCAL CHARITIES AND CLUBS IN 2014



Thursday 6th November – 7.30pm

Annual General Meeting – All Members Welcome
★★★★

Saturday 15th November - **BENNY JAY**

Sensational Male Vocalist – Back by Popular Demand
★★★★

Sunday 7th December - Starting at 4pm

CHRISTMAS FAMILY DISCO

Party Food & Games - Including special visit by Father Christmas
★★★★

Friday 12th December - doors open 7.30pm

SENIOR CITIZENS CHRISTMAS PARTY

Night of festive sing-a-long with brilliant **MARTY ELLIOTT**
★★★★

NEW YEARS EVE PARTY

with Rock 'n' Roll Entertainer **ALAN WILLIAMS**

STRICTLY TICKETS ONLY – NOW AVAILABLE FROM THE CLUB BAR
★★★★

For further details on membership or entertainment, please ask at the club bar, find us on Facebook or contact us on (01299) 271448



Jules ~ Jewellers & Dawnbrokers



We make, sell and buy gold and diamond jewellery
Jewellery repairs undertaken
The Gold buying Centre

Tel: 01299 272 904



THE CLEOBURY COUNTRY CENTRE

Contacting us:

t: 01299 272 300

e: business@cleoburycountry.com

www.cleoburycountrycentre.com

Training Courses Upcoming:

- Emergency First Aid at Work; 27th January 2015
- Food Hygiene Level 3: 19,20 & 21st January 2015
- Food Labelling Course: 9th January 2015
- Facebook and Pintrest Course: 12th February 2015

Business Networking this month:

Wednesday 21st January 2015

For more information on training courses at
The Cleobury Centre please contact us on the number or email
above.

Cleobury Country Centre, Love Lane, Cleobury Mortimer, DY14 8PE

Cleobury Mortimer Nursery

Located at
Lacon Childe School

Good links with the local community making regular visits to the local primary school, library and church

The children have fun at Gym-tots

We encourage parents to be part of their child's learning

Experience our outdoor nursery in the Wild Area

Ofsted report 'GOOD'

For further information contact
April Rogers
Tel: 07929870458 or out of hours
Tel: 01299 271418
www.cleoburymortimernursery.co.uk

Providing high quality care and education with qualified staff with many years of experience

Children are welcome from the age of 2

15 hours of funding available for 3-4 year olds

2 year old funding available

Open
Mon 9.00-1.15
Tue 9.00-3.15
Wed 9.00-3.15
Thu 9.00-3.15
Fri 9.00-1.15 (term time)



“The days that make us happy make us wise”

John Masefield



Moffats

Preparatory school for children aged 3 to 13

Nursery Funding available
Call now to arrange a visit

01299 841230 • moffats.co.uk

Kinlet Hall • DY12 3AY On the B4363, 5 minutes from Cleobury Mortimer

AL Pass Driving School

You never forget the day you

Pass your driving test

Introductory lesson free!

Your local driving Instructor 0789 67 41041



Mark Pearce

Landscape, Design and Rustic Garden Furniture

- Fencing
- Patios
- Drives
- Decking
- Garden Sheds
- Summer Houses
- Fence Panels
- Log Stores



And Much More
Top Quality Fully Treated Timber Products
Mobile: 07875425028 Tel: 01746718404

MARK WILLIAMS - PROFESSIONAL WILLWRITER

"A lifetime's attention to the most complex of legal issues as a retired Detective Superintendent and now a Private Client Lawyer, means **you can definitely trust Mark** to write your Will."

Wills, Lasting Powers of Attorney, Probate Support
Care Home Fee Avoidance & Funeral Plans

Standard Wills from £65 per person

Instructions taken in the comfort of your own home

T: 01299 251442 M: 07966 053887 E: mw@ambawills.co.uk

Member of the Institute of Professional Willwriters & Office of Fair Trading Approved



Quercus Landscapes

Architecture, Landscape Design & Garden Design

Fully qualified **Architect** with 25 years experience providing innovative design solutions and services and fully qualified **Landscape Architect** providing professional **Garden Design** & Landscape Architectural services.

Domestic and commercial clients, no job too small, all sizes of projects considered.

For professional and friendly advice please call **07769 919 197**



Lisa Cotgrave

Painting- Decorating-Property Services

Painting, Wallpaper Hanging, Tiling, Flat Pack Furniture Assembly
& All those other little jobs you never get time to do.

Friendly Reliable Service

Special Rates for OAPs

Call Lisa On 07875 392313



Bayton C of E Primary School, where our mission is

BE THE BEST THAT YOU CAN BE!

At the end of term the staff, children and families of Bayton C of E Primary School were sad to say goodbye to our much loved Reception Class Teaching Assistant, Mrs Farr. Mrs Farr had worked at Bayton for over thirteen years and was hanging up her Teaching Assistant hat to retire from a career that spanned over 40 years. During the past three years she has been found in the library each morning, teaching Read Write Inc to our younger children, wearing green Freddie frog slippers and incentivising children with Freddie Friday treats. Mrs Farr put so much energy and enthusiasm into teaching this literacy scheme giving our children a strong foundation to enable them to continue their literacy journey through Key Stage 1.



To mark the occasion of her retirement, children across the school wrote letters, poems and recorded their memories which were put together to make a book detailing her time in school. A tea party was given whereby students past and present together with their families and our staff came to say goodbye. Mrs Farr has been replaced by Mrs Bristow, whose own children have attended Bayton.

At the end of this term we also said a fond farewell to Miss Grady who is a PGCE student and has spent the past eight weeks working with our Reception children. Miss Grady will be returning to Bayton in the summer term for her final placement. We will soon be welcoming other PGCE students from Worcester and Birmingham universities and we are also lucky enough to have Teaching Assistants on work placement from both Ludlow and Kidderminster colleges. Having extra help in school is always a bonus and we have been lucky with the high standard of students we have had in school. Indeed our very own Mr Langdon (year 2 teacher) made such an impact during his PGCE placements in school that he is now in his second year of employment here.

It has been brought to our attention that families living in Shropshire wishing to apply for a place at our school for next September have been unable to find our details - School Admissions has corrected this. For further details about our school, contact the office on 01299 832393.

Alternatively, visit our website at www.baytonpri.worcs.sch.uk

CLARK'S OF KIDDERMINSTER



Way of Life!

ALL 3 NEW SUZUKI'S VAT FREE



**Alto Range from only
£5,999
Or £83 per month
VAT FREE & 0% Finance**



**Splash Range from only
£7,999**



**Swift Range from only
£8,999**

**4x4 Model
Available**

**NEW SUZUKI
S-CROSS FROM ONLY
£15,499
+3 YEARS FREE SERVICING!***



Alto, Splash and Swift range official fuel consumption figures in mpg (L/100km): Urban from 40.9 (6.9) to 55.4 (5.1), extra urban from 56.5 (5.0) to 78.5 (3.6), combined from 49.6 (5.7) to 67.3 (4.2). Official CO2 emissions from 131 g/km to 99 g/km. SX4 S-Cross range official fuel consumption figures in mpg (L/100km): Urban from 39.7 (7.1) to 55.3 (5.1), extra urban from 56.3 (5.1) to 76.3 (3.7), combined from 47.8 (5.9) to 67.2 (4.2). Official CO2 emissions from 135g/km to 110g/km. All images for illustration purposes only. Alto from £5,999 or £2999.50 deposit with 36 monthly payments of £83.31 0% APR. Finance subject to status, terms and conditions apply. *For private customer registrations.



Tel: 01562 862 822
WORCESTER ROAD, KIDDERMINSTER, DY10 1JR
www.clarksofkidderminster.co.uk



TURNERS GATES



All types of wooden gates made and installed

Fencing and timber products

Bespoke and standard gates made to suit all budgets in hardwood or softwood

All types of fencing supplied and erected and bespoke timber products

www.turnersgates.co.uk turner833@btinternet.com



Tel: 01299 270965



Tiny Stots
Informal parent
and toddler group
Fridays (term time)
10am-noon

Chorley Family Playgroup

Located
next to
Stottesdon
School



...shaping the future

Highly-qualified staff providing Early Years Foundation Stage learning in a happy, safe and stimulating playgroup with a beautiful garden and outdoor play area.

Ofsted
'GOOD'
report



Open
Mon-Fri
8am-5.30pm
(term time)
Competitive fees
Vouchers accepted
Holiday care available

Extra-curricular
activities including
yoga, dance,
craft projects, trips and
gardening to support
your child's learning
through play.

Community orientated
with strong links to
local schools.
15 hours per week
of funding available
for children over 3.

01746 718769 www.chorleyfamilyplaygroup.co.uk

Ofsted Reg. No. EY369688
Charity No. 1018755

Posh Potties

Luxury Designer Toilet Hire

Are you having a garden party or BBQ this summer? Or even a special event such as a Wedding or Christening?

If so we have all types of Portable Toilets available to hire –
from Plastic Portaloos to Large Luxury Toilet Trailers.

We can also provide Refrigerated Trailer Hire

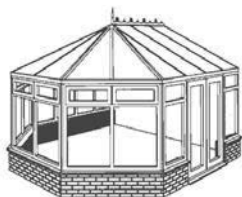
Please visit our website or contact Emma or Chris on 01746 718518 / 07929 314020 for more information.

www.poshpotties.co.uk

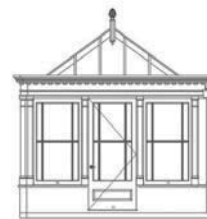
emma@poshpotties.co.uk

SKELLERNS

DOORS & WINDOWS



- Type to enter text
- UPVC Fascias & Guttering
- UPVC Windows, Doors, & Conservatories
- General home improvements
- Re-roofing & general building
- Replacement Glass
- Patio jet washing



Free No-obligation quote. FENSA registered company with years of experience

Call Mike on 01746 718188 or mobile: 07814 577739

The Old Police House, Stottesdon, Cleobury Mortimer, DY14 8UE

Luxury Eco Holiday Lodges For Sale At Cleobury Mortimer Golf Club

A unique opportunity to purchase and personalise your very own Luxury Eco Lodge in an exclusive development at Cleobury Mortimer Golf Club.

The first phase of this exciting development opens with your chance to buy a luxury eco lodge in beautiful South Shropshire and play unlimited golf on our fantastic 27 hole golf course.

With two lodge designs the 'Cleobury' and the 'Mortimer'. Both lodges are the perfect second home or holiday retreat.



- Fully Personalised To Your Taste
- Lucrative Rental Opportunity
- 365 Days A Year Occupancy
- Fully Furnished
- Exclusive Site On Golf Complex

Starting From £140,000

For more information or to request a brochure visit:

www.cleoburycountrylodges.com

The Wyre Suite At C.M.G.C Is Perfect For:

- Christenings • Birthdays • Funeral Wakes
- Presentation Nights • Christmas Parties

Set in over 200 acres of glorious countryside with the Wyre Forest as its backdrop, the Wyre Suite has its own private bar, dining for up to 100 guests, a dance floor and a balcony overlooking our stunning 27 hole golf course.

Tel: 01299 271 112

IN BUSINESS: Wyre Forest Funeral Service



He's in one of the most demanding jobs you could imagine. As a funeral director, Adrian Satterly deals with people in a highly emotional state, often in shock, facing one of the most trying situations in life. They need a shoulder to cry on, someone who will know how to deal with all the tasks and problems the death of a loved one can bring. As the only full time employee in the business he's on call 24 hours a day, seven days a week, to bring comfort to the bereaved and deal with any problems they may face.

He comes from a family well established in the profession, and broke away to start on his own. He had been operating in Somerset for 12 years when he met Wendy Chadwick as director of her mother's funeral.

There was a strong chemistry between the two, they fell in love and Adrian moved to Cleobury Mortimer and a new start. Initially he had an office in the Market Hall, but that offered no public profile and the chance of premises on Talbot Square saw him moving in.

It's a dignified, quiet operation. If the family want the deceased to be moved to a Chapel of Rest as soon as possible, Adrian calls in his own estate car. He spurns the van some prefer as too commercial at such a delicate time. That care for the feelings of the family reflects in his choice of people who help him - all professionals he knows and trusts. He's seen some examples of hurried funerals that upset families; like the priest taking the cremation service getting the name wrong, then leaving before the final hymn. Surely not normal? "No, that is very, very rare," he reassures. "I offer a high level of care. I treat everyone as I would a member of my own family." He is in a competitive business, but one where people use firms they know and can trust, or have been recommended by friends. So for the floral tributes his choice is Flowers by Fiona on

the High Street, just a few yards away from his office.

Funerals can be tailored for any particular need, from horse drawn hearses with the animals in a range of colours and the carriage in black, white or even pink. He can provide a Daimler hearse painted in the Union Flag and a range of vehicles from an 'Only Fools and Horses' van to a camper van or a Land Rover, as well as conventional hearses in different shades.

With the cost of funerals rising as crematoria charges and church fees grow, he finds more people using pre-paid plans to cover the cost. It's a piece of forward thinking that relieves relatives of one area of stress and the money is held in a secure fund. Better value than a conventional insurance, he says.

Does he ever get caught up in the emotion of the occasion? "Any funeral director who says he doesn't get caught up shouldn't be in the business. But I'm there for the family at the end of the day, so I just get on with the job."

And dare we ask if he's happy in this chosen career? 'Very happy. Knowing I can help people through a very difficult time in their life is a privilege.'

WYRE FOREST FUNERAL SERVICE

Independent Family Funeral Directors covering Cleobury & all surrounding areas offering a complete, dignified, personalised Funeral Service.

* *Pre-Payment Funeral Plans*

* *Horse Drawn Funerals Available*

* *Home Visits*

* *Catering & Venue Arranged*

* *Monumental Masonry*

* *Personal Service*

Funeral Director: Adrian Satterly

9, TALBOT SQUARE, CLEOBURY MORTIMER

TELEPHONE: 01299 540541 OR 07450 764214 (24-HOURS)

'Serving the local community with dignity and understanding'



CLEOBURY CHIROPRACTIC

31 High St. DY14 8DQ

www.notjustaboutbackpain.com



A refreshingly gentle method of chiropractic suitable for all ages.

- * BACK PAIN * SCIATICA * POSTURAL PROBLEMS
- * SCIATICA * SPORTS INJURIES * JOINT PAIN

PLUS * CORPORATE COMPUTER (DSE) WORKSTATION ASSESSMENTS

* **BACK CLASS** – Weekly exercise class for those with back/neck pain

Sue Brown MA MSc DC MMCA

07932 00 00 28



Qualified injury rehabilitation therapist.

Experienced with a wide range of injuries & medical conditions including :-

- General aches and pains
- Joint pains
- Arthritic and rheumatic pain
- General back and neck ache
- Headaches arising from the neck
- Circulatory problems
- Lumbago
- Sciatica
- Neuralgia
- Fibromyalgia
- Sports injuries
- Muscle tension and imbalances

JS James Smith

injury rehabilitation therapist

James works alongside Sue Brown at Cleobury Chiropractic in the High Street.

If you would like an early-morning or evening appointment then please call James on: 07506 287191.

T.PREECE

TIMBER BUILDINGS LTD

The Old Station Business Park - Bridgnorth Rd - Cleobury Mortimer - DY14 8SY

Custom Built Log Cabins & Timber Framed Mobile & Permanent Homes

Garden Buildings-Home Offices-Garages- Glamping & Shepherds Huts



01299 272801 - 07970078336 - www.tptimberbuildings.co.uk

Clarion Clippings - The Local News

NEWS FROM THE GUIDES

This report from Rebecca Barnes came in after our report on the Pumphouse exodus was written. We are happy to publish it, to give a balanced view. Ed.

Exciting times are ahead for Cleobury Girl Guiding Units!

Having already moved their meetings to the Market Hall about a year ago, The Brownies are now going to be followed by all the other Guiding units early in 2015.

The reasons are various, but are based on giving the young girls in the Cleobury district and beyond the very best experience that Girl Guiding can offer with new and exciting challenges. We have shared the Pump House with the Scouts in the past, but we have now made the decision that the time has come for us to stand alone.

Cleobury has six thriving Guiding units that cater for girls of all ages from five upwards, that are run by a dedicated team of trained volunteers who give girls a widely varied programme. "We Discover, We Grow".

Brownie News

This Autumn term, Brownies have been given some basic First Aid training in order to receive their badges. They have done seasonal badge work, which involved making wreaths, they have made and eaten apple crumble, planted and grown bulbs, and celebrated Christmas with a Disco just to name a few.

We have had a wonderful year celebrating 100 years of Brownies, and we finished it with a bang, taking 50 girls, leaders and helpers to

Wolverhampton to see the pantomime Cinderella.

MORE ABOUT OIL TANKS!

Eve Brookes wrote to offer some good advice:

Referring to the letter in last month's Clarion on page 25, I am sure that if the person who wrote the letter 'All about Oil Tanks' read the Clarion regularly they would have seen the ad on page 36 for Oilspill Cleanup Company who are local, based in Cleobury and who undertake all the jobs mentioned in the letter. Why have to resort to using people from Worcester when you have someone local and at hand to do the job?

Perhaps someone should point this out.

Regards

Eve Brookes

I think you've just done that very effectively, Eve. Ed.

SOME FACTS ABOUT SEVERN HOSPICE

This information is taken from a Severn Hospice leaflet, meant to show where the money goes. Interesting reading.

They employ 165 nurses and have a total of 24 inpatient beds at their hospices at Bicton and Apley. They have cared for about 23,000 people since the charity was founded 26 years ago and last year they had 4,152 Day Hospice attendances. But four out of five patients are actually cared for at home.

In 2011 Severn Hospice took over management of the former Macmillan community based nurses in Shropshire and Powys. The nurses are now part of the Severn Hospice Nurse Specialist team.

Last year it cost £9 million to run the charity, or £24,657 a day. The supporters helped raise £6,260,000, or £17,150 a day. It's certainly a big business and it gives good value for all donations - 90p in every pound goes towards funding the services.

Next time you pick up a bargain in the shop or donate something to be sold, give yourself a pat on the back for helping such a great cause.

THE SPARC THEATRE

This very lively outfit are based in Brampton Road, Bishops Castle and their Winter leaflet has just been published on their website. Go to www.sparctheatre.co.uk to get an idea of the variety they can offer.

It links to the National Theatre to bring live broadcasts of some star attractions beamed into the theatre. Like Ralph Fiennes on Shaw's 'Man and Superman' in May. And there's an active players group built around the theatre, who keep the entertainment local with their own productions.

It's difficult recommending an evening outing to the place in winter, because the 30 mile journey home in the dark may seem daunting; your choice. But in the summer months, the drive over to the Welsh border through some stunning scenery leaves you feeling that the world's a better place. If you want to make day of it, there are some good eateries there too.

If you're feeling mildly adventurous, have a look at what they're doing and think about a trip. Even a coach outing, if you're a member of a local club.

For all of your picture framing needs, visit

Cross House Arts

Picture Framing Gallery, Mable

Ring George or
Dean anytime
01299 832616

incorporating

**Frames By
Design Ltd**

Cross House, Mable, Worcs. DY14 9JL
01299 832616 (opposite the Sun & Slipper pub)
www.pictureframes-uk.com
Open Wed. to Sat. 10:00am—5:00pm

Argo Plastics

TEL: 01562 823531

EMAIL: INFO@ARGOPLASTICS.CO.UK

FAX: 01562 825417

WWW.ARGOPLASTICS.CO.UK

STOCKISTS OF

CUT-TO-SIZE ACRYLIC SHEET

TWINWALL POLYCARBONATE SHEETS

AND ACCESSORIES

PVC CORRUGATED SHEETS

POLYPROPYLENE CLADDING SYSTES

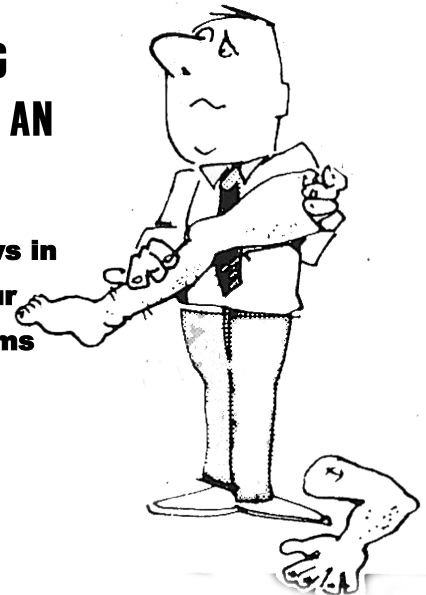
ACRYLIC SIGNAGE

IF ITS PLASTIC WE PROBABLY DO IT!

SECONDARY GLAZING DOESN'T HAVE TO COST AN ARM AND A LEG.

**Double glaze your windows in
next to no time with our
magnetic window systems**

**4'X3' WINDOW @
£39.99 INC.**



UNIT 6B, PARK STREET INDUSTRIAL ESTATE, KIDDERMINSTER, DY11 6TN

Aches & pains? Lack of energy? Stressed out? Feeling down? Trouble Sleeping?



Why not enjoy the amazing benefits and complete sense of wellbeing that regular Holistic Therapy Treatments such as Reflexology, Reiki, Aromatherapy, Indian Head Massage, Sports/Remedial Massage, Hot Stone Massage & Crystal Therapy can bring.



With treatments starting at only £20, why just survive – when you can absolutely **THRIVE?**



Louise has worked in the health & wellbeing industry for the last 16 years and is an experienced therapist based at Shirley's Hairdressers every Friday. Louise delivers bespoke, effective treatments tailored to your specific needs. For more information or to book an appointment please contact

Louise Brown-Knott, F.F.H.T. Tel: 07932 551007

Holistic Health, Therapy & Training

Do you need a boost? Why not indulge yourself with a **FREE** Hand, Foot or Facial treatment to demonstrate to you the power of Forever Living Products? To book please call the number above.

www.louisebrownknott.co.uk



35 High Street Cleobury Mortimer



4 bedroom Victorian town house in the heart of Cleobury Mortimer. EPC Rating E. £229,995

6 Woodlands Rise Cleobury Mortimer



4 bedroom detached property, edge of town, large garden, country views. EPC Rating D £375,000

10 Lea View Cleobury Mortimer



Beautifully presented 3 bedroom detached bungalow, on outskirts of the own. EPC Rating D £259,995

Chestnut Cottage Hopton Bank



A most impressive family home with panoramic views. EPC Rating F £325,000

Our team is here to meet you...
36 High Street • Cleobury Mortimer
DY14 8DQ • Tel 01299 567004
WWW.NOCKDEIGHTON.CO.UK



Kate



Jane



Mandy

Property Agents | Valuers | Surveyors | Auctioneers

Bridgnorth | Ironbridge | Ludlow | Shrewsbury | Telford

2014 - Another Record Year for Sales!

McCartneys sell more houses across
our area than any other agent

So if you are thinking of moving in 2015
call our sales team for a Free Market
Appraisal. Our trained and experienced
staff can offer advice on price and
marketing strategy to ensure you get the
very best price for your home.

We offer

- Free accompanied viewings
- Bespoke brochures with professional photography
- A floor plan on every home
- A dedicated sales negotiator to help you through every stage of your sale
- Unrivalled newspaper coverage
- Your property uploaded to the UK's leading Property Portal
- 20 offices covering 5 counties
- Fine & Country Homes from McCartneys showcasing the very best homes in your area.

Call your local office today and let us
help you celebrate selling your old
home and buying your new one!



View over 1000 properties online at www.mccartneys.co.uk

Bishops Castle: 01588 630070
Builth Wells: 01982 552259
Brecon: 01874 610990
Bridgnorth: 01746 767488

Church Stretton: 01694 722288
Cleobury Mortimer: 01299 270301
Craven Arms: 01588 672385
Hay-On-Wye: 01497 820778

Kidderminster: 01562 822244
Kington: 01544 230316
Knighton: 01547 528621
Leominster: 01568 610222

Llandrindod Wells: 01597 823300
Ludlow: 01584 872153
Newtown: 01686 623123
Presteigne: 01544 267038

Rhayader: 01982 552259
Stourport: 01299-822060
Tenbury Wells: 01584 811999
Welshpool: 01938 531000